

# BUSINESS & PHOTO SCANNER



**1**  
**#**

**DOCUMENT SCANNER 2021**

EPSON

Source: Southeast Asia Document Scanner Market Share, 2021: Growth in Developing Markets, IDC, Jul 2022

Source: IDC's Southeast Asia Document Scanner Market Share, 2021: Growth in Developing Markets, IDC, Jul 2022. © 2022 Epson America, Inc. All rights reserved. Epson, the Epson logo, and ReadyScan are trademarks of Epson America, Inc. in the U.S. and other countries.



Bill To: Ring Works  
2018 East Broadway Drive  
Aurora, IL 60012

Bill From: Ring Works  
2018 East Broadway Drive  
Aurora, IL 60012

DATE: 10/16/2018  
INVOICE #: 452679  
TOTAL: \$114.56

DESCRIPTION	QTY	PRICE	TOTAL
Buy computer	2	\$20.00	\$40.00
Support equipment	1	\$10.00	\$10.00
Precision fittings	6	\$17.00	\$102.00
SUBTOTAL			\$96.00
SHIPPING			\$10.00
TAX RATE			\$8.56
<b>TOTAL</b>			<b>\$114.56</b>

# BUSINESS & PHOTO SCANNER

## MENGAPA MEMILIH EPSON SCANNER ?

Dapatkan kecepatan dan kualitas terbaik dengan berbagai pilihan scanner terbaru dari Epson yang mampu menangkap semua detail untuk memenuhi kebutuhan bisnis Anda. Dengan fitur dan teknologi canggih milik Epson, Scanner ini memberi Anda lebih banyak daya, volume lebih tinggi, dan kecepatan lebih cepat untuk produktivitas lebih baik.

### CCD System

Pemindai memanfaatkan Charge-Coupled Device (CCD) scanning system, memantulkan dokumen yang diterangi dari serangkaian cermin melalui lensa ke sensor

kelebihan dari Teknologi CCD

- Kecepatan pemindaian lebih tinggi
- lebih jelas dan lebih detail untuk pemindaian film
- Kedalaman bidang yang lebih besar saat memindai dokumen atau objek 3D yang tidak rata pada kaca pemindai
- Kepadatan optik lebih tinggi



CIS Scanner

Text on "contactless" area is not clear



CCD Scanner

Text on "contactless" area is clear

### ReadyScan LED Technology

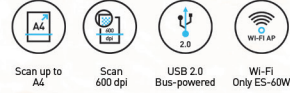
Dengan Teknologi ReadyScan LED, pemindaian dimulai secara instan tanpa memerlukan waktu pemanasan. Teknologi ini ramah lingkungan karena bebas merkuri, disipasi panas rendah dan membutuhkan konsumsi daya yang lebih rendah.



# BUSINESS & PHOTO SCANNER

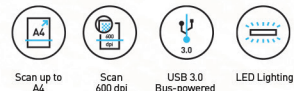
## A4 Portable Sheet-Fed Scanner

### WORKFORCE ES-50/ES-60W



- Scanner Type** A4 Sheet-fed colour scanner
- Sensor Type** Contact Image Sensor (CIS)
- Light Source** RGB LED
- Optical Resolution** 600 x 600 dpi
- Scan Area** A4 (support F4)
- Document Size (Min)** 50.8 x 50.8 mm
- (Max)** 216 x 1,828.8 mm
- Supported Paper Weight** 35 - 270 g/m2
- ADF Capacity** 1 sheet
- Scanning Speed** 5.5 sec (ES-50), 4.0 sec (Battery) / 5.5 sec (USB Bus Powered) (ES-60W)
- Operating System** Windows XP / Vista / 7 / 8 / 8.1 / 10 / Server 2003 / 2008 / 2012 / 2016 Mac OS X 10.6.8 or later
- Interface** USB 2.0 (Micro-B), Wi-Fi (ES-60W)
- Dimensions** 272 x 47 x 33.8 mm
- Weight** 270g (ES-50), 300g ES-60W

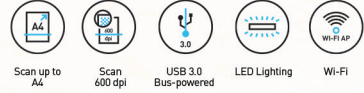
### WORKFORCE DS-310



- Scanner Type** A4 sheet-fed, one-pass duplex colour scanner
- Sensor Type** Contact Image Scanner (CIS)
- Light Source** RGB LED
- Optical Resolution** 600 x 600 dpi
- Scan Area** A4 (support F4)
- Document Size (Min)** 50.8 x 70 mm
- (Max)** 216 x 1,117 mm
- Supported Paper Weight** 51.8-128 g/m2 (Postcard: 128-230 g/m2)
- ADF Capacity** 20 sheets (80 g/m2)
- Scanning Speed** 25 ppm/50 ipm (AC Adapter/Built-in Battery3), 5.0 ppm/10 ipm (USB 3.0 Bus Power)
- Operating System** Windows XP/ Vista / 7 / 8 / 8.1 / 10 Mac OS X 10.5 .X or later
- Interface** USB 3.0
- Dimensions** 288 x 88.5 x 51 mm
- Weight** 1,1 kg

# BUSINESS & PHOTO SCANNER

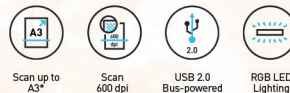
## WORKFORCE DS-360W



- Scanner Type** A4 sheet-fed, one-pass duplex scanner
- Sensor Type** Contact Image Scanner (CIS)
- Light Source** RGB LED
- Optical Resolution** 600 x 600 dpi
- Scan Area** A4 (support F4)
- Document Size (Min)** 50.8 x 70 mm
- (Max)** 216 x 1,117 mm
- Supported Paper Weight** 51.8-128 g/m2 (Postcard: 128-230 g/m2)
- ADF Capacity** 20 sheets (80 g/m2)
- Scanning Speed** 25 ppm/50 ipm (AC Adapter/Built-in Battery3), 5.0 ppm/10 ipm (USB 3.0 Bus Power)
- Operating System** Windows XP/ Vista / 7 / 8 / 8.1 / 10  
Mac OS X 10.6.8 or later
- Interface** USB 3.0, Wi-Fi, Wi-Fi Direct
- Dimensions** 288 x 88.5 x 67 mm
- Weight** 1,3 kg

## Sheet-Fed

## WORKFORCE DS-410



- Scanner Type** A4 Sheet-fed, one-pass duplex colour scanner
- Sensor Type** Contact Image Sensor (CIS) x 2
- Light Source** RGB LED
- Optical Resolution** 600 x 600 dpi
- Scan Area** A4 (support F4)
- Document Size (Min)** 50.8 x 50.8 mm
- (Max)** 215.9 x 3,048 mm
- Supported Paper Weight** 50 - 209 g/m2 (A8 or less : 127 - 209 g/m2)
- ADF Capacity** 50 sheets (80g/m2)
- Scanning Speed** 26 ppm / 52 ipm (Monochrome, Colour)
- Operating System** Windows XP / Vista / 7 / 8 / 8.1 / 10 / Server  
2003 / 2008 / 2012 / 2016, Mac OS X 10.6.8 or later
- Interface** USB2.0
- Dimensions** 297 x 152 x 154 mm
- Weight** 2,5kg

# BUSINESS & PHOTO SCANNER

## A4 Sheet-Fed Scanners



### WORKFORCE DS-530II



Scan up to A3\*

Scan from 27gsm to 413gsm

One Pass Duplex Scanning

- Scanner Type** A4 Sheet-fed, one-pass duplex colour scanner
- Sensor Type** Contact Image Scanner (CIS)
- Light Source** RGB LED
- Optical Resolution** 600 x 600 dpi
- Document Size (Min)** 50.8 x 50.8 mm
- (Max)** 215.9 x 6096 mm
- Supported Paper Weight** 27 - 413 g/m2 (A8 or less 127 - 413 g/m2)
- ADF Capacity** 50 sheets (80g/m<sup>2</sup>)
- Scanning Speed** Resolution (Colour/Greyscale/Mono) Simplex / Duplex  
200 dpi 35 ppm / 70 ipm  
300 dpi 35 ppm / 70 ipm  
600 dpi 8 ppm / 16 ipm
- Operating System** Windows XP / Vista / 7 / 8 / 8.1 / 10 / Server 2003 / Server 2008 / Server 2012 / Server 2016  
USB 3.2 Gen 1
- Interface**
- Dimensions** 296 x 169 x 176 mm
- Weight** 3.7 kg



### WORKFORCE DS-570WII



Scan up to A4

Scan from 27gsm to 413gsm

One Pass Duplex Scanning

Wi-Fi\*\*

Epson Smart Panel\*\*

- Scanner Type** A4 Sheet-fed, one-pass duplex colour scanner
- Sensor Type** Contact Image Scanner (CIS)
- Light Source** RGB LED
- Optical Resolution** 600 x 600 dpi
- Document Size (Min)** 50.8 x 50.8 mm
- (Max)** 215.9 x 6096 mm
- Supported Paper Weight** 27 - 413 g/m2 (A8 or less : 127 - 413 g/m2)
- ADF Capacity** 50 sheets (80g/m<sup>2</sup>)
- Scanning Speed** Resolution (Colour/Greyscale/Mono) Simplex / Duplex  
200 dpi 35 ppm / 70 ipm  
300 dpi 35 ppm / 70 ipm  
600 dpi 8 ppm / 16 ipm
- Operating System** Windows XP / Vista / 7 / 8 / 8.1 / 10 / Server 2003 / Server 2008 / Server 2012 / Server 2016  
USB 3.2 Gen 1, Wi-Fi (802.11 b/g/n)
- Interface**
- Dimensions** 296 x 169 x 176 mm
- Weight** 3.7 kg

# BUSINESS & PHOTO SCANNER



## WORKFORCE ES-580W



Scan up to A4



4.3" Touchscreen Panel



One Pass Duplex Scanning



Wi-Fi



Epson Smart Panel

<b>Scanner Type</b>	A4 Sheet-fed, one pass duplex colour scanner
<b>Sensor Type</b>	Colour Contact Image Sensor (CIS)
<b>Light Source</b>	RGB LED
<b>Optical Resolution</b>	600 x 600 dpi
<b>Document Size (Min)</b>	50.8 x 50.8 mm
<b>(Max)</b>	215.9 x 6096 mm
<b>Supported Paper Weight</b>	27 - 413 g/m <sup>2</sup>
<b>ADF Capacity</b>	100 sheets (80 g/m <sup>2</sup> )
<b>Scanning Speed</b>	Resolution (A4, Colour/Monochrome) 300 dpi 35 ppm / 70 ipm 600 dpi 12 ppm / 24 ipm
<b>Operating System</b>	Windows 7 / 8 / 8.1 / 10 / Server 2003 / Server 2008 / Server 2012 / Server 2016 / Server 2019
<b>Interface</b>	USB 3.2 Gen 1, Wi-Fi (802.11 b/g/n), Wi-Fi Direct (max 8 connections)
<b>Dimensions</b>	296 x 169 x 167 mm
<b>Weight</b>	3.7kg



## WORKFORCE DS-730N



Scan up to A4



Colour LCD



One Pass Duplex Scanning



Ethernet

<b>Scanner Type</b>	Sheet-fed, one pass duplex colour scanner
<b>Sensor Type</b>	Colour Contact Image Sensor (CIS)
<b>Light Source</b>	RGB LED
<b>Optical Resolution</b>	600 x 600 dpi
<b>Document Size (Min)</b>	50.8 x 50.8 mm
<b>(Max)</b>	215.9 x 6096 mm
<b>Supported Paper Weight</b>	27 - 413 g/m <sup>2</sup>
<b>ADF Capacity</b>	100 sheets (80 g/m <sup>2</sup> )
<b>Scanning Speed</b>	Resolution (A4, Colour/Monochrome) 300 dpi 40 ppm / 80 ipm 600 dpi 12 ppm / 24 ipm
<b>Operating System</b>	Windows XP SP3 / Vista / 7 / 8 / 8.1 / 10 / Server 2003 / Server 2008 / Server 2012 / Server 2016 / Server 2019
<b>Interface</b>	USB2.0 and Ethernet (1000BASE-T/100BASE-TX/10BASE-T)
<b>Dimensions</b>	296 x 169 x 167 mm
<b>Weight</b>	3.6kg

# BUSINESS & PHOTO SCANNER

## A4 Sheet-Fed Scanners



### WORKFORCE DS-770II



Scan up to A3\*

Scan from 77gsm to 413gsm

One Pass Duplex Scanning

<b>Scanner Type</b>	A4 Sheet-fed, one pass duplex colour scanner
<b>Sensor Type</b>	Contact Image Sensor (CIS)
<b>Light Source</b>	RGB LED
<b>Optical Resolution</b>	600 x 600 dpi
<b>Document Size (Min)</b>	50.8 x 50.8 mm
<b>(Max)</b>	215.9 x 6096 mm
<b>Supported Paper Weight</b>	27 - 413 g/m <sup>2</sup> (A8 or less 127 - 413 g/m <sup>2</sup> )
<b>ADF Capacity</b>	100 sheets (80g/m <sup>2</sup> )
<b>Scanning Speed</b>	Resolution (Colour/Greyscale/Mono) Simplex / Duplex 200 dpi 45 ppm / 90 ipm 300 dpi 45 ppm / 90 ipm 600 dpi 12 ppm / 24 ipm
<b>Operating System</b>	Windows XP / Vista / 7 / 8 / 8.1 / 10 / Server 2003 / Server 2008 / Server 2012 / Server 2016
<b>Interface</b>	USB 3.2 Gen 1
<b>Dimensions</b>	296 x 169 x 176 mm
<b>Weight</b>	3.7 kg

### WORKFORCE DS-790WN

NEW  
PRODUCT



Scan up to A3\*

Scan 600 dpi

USB 3.0 Bus-powered

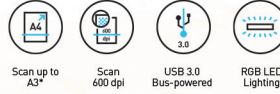
RGB LED Lighting

<b>Scanner Type</b>	A4 sheet-fed, one-pass duplex colour scanner
<b>Sensor Type</b>	Colour Contact Image Sensor (CIS) x 2
<b>Light Source</b>	RGB LED x 2
<b>Optical Resolution</b>	600 x 600 dpi
<b>Document Size (Min)</b>	50.8 x 50.8 mm
<b>(Max)</b>	215.9 x 6096 mm
<b>Supported Paper Weight</b>	27 - 413 g/m <sup>2</sup> (A8 or less 127 - 413 g/m <sup>2</sup> )
<b>ADF Capacity</b>	100 sheets (80 g/m <sup>2</sup> )
<b>Scanning Speed</b>	Resolution (Colour/Greyscale/Mono) Simplex / Duplex 200 dpi 45 ppm / 90 ipm 300 dpi 45 ppm / 90 ipm 600 dpi 12 ppm / 24 ipm
<b>Operating System</b>	Windows XP / Vista / 7 / 8 / 8.1 / 10 / 11, Server 2003 / 2008 / 2012 / 2019 / 2022 Mac OS X 10.6.8 or later
<b>Interface</b>	USB 3.2 Gen 1, Ethernet (1000BASE-T/100BASE-TX/10BASE-T), Wi-Fi (IEEE 802.11 b/g/n), Wi-Fi Direct (max 8 connections), USB 2.0 Host
<b>Dimensions</b>	296 x 169 x 167 mm
<b>Weight</b>	3,7kg

# BUSINESS & PHOTO SCANNER



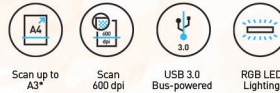
## WORKFORCE DS-870



- Scanner Type** A4 Sheet-fed, one pass duplex colour scanner
- Sensor Type** Contact Image Sensor (CIS)
- Light Source** RGB LED
- Optical Resolution** 600 x 600 dpi
- Document Size (Min)** 50.8 x 50.8 mm
- (Max)** 215.9 x 6096 mm
- Supported Paper Weight** 27 - 413 g/m<sup>2</sup> (A8 or less 127 - 413 g/m<sup>2</sup>)
- ADF Capacity** 100 sheets (80 g/m<sup>2</sup>)
- Scanning Speed** Resolution (Colour/Greyscale/Mono)  
Simplex / Duplex  
200 dpi 65 ppm / 130 ipm  
300 dpi 65 ppm / 130 ipm  
600 dpi 16 ppm / 32 ipm
- Operating System** Windows XP / Vista / 7 / 8 / 8.1 / 10  
Mac OS X 10.5.X or later
- Interface** USB 3.0, Optional Ethernet (With Network Interface Unit)
- Dimensions** 296 x 169 x 167 mm
- Weight** 3,6kg



## WORKFORCE DS-970



- Scanner Type** A4 Sheet-fed, one pass duplex colour scanner
- Sensor Type** Contact Image Sensor (CIS)
- Light Source** RGB LED
- Optical Resolution** 600 x 600 dpi
- Scan Area** A4 (support F4)
- Document Size (Min)** 50.8 x 50.8 mm
- (Max)** 215.9 x 6096 mm
- Supported Paper Weight** 27 - 413 g/m<sup>2</sup> (A8 or less 127 - 413 g/m<sup>2</sup>)
- ADF Capacity** 20 sheets (80 g/m<sup>2</sup>)
- Scanning Speed** Resolution (Colour/Greyscale/Mono)  
Simplex / Duplex  
200 dpi 65 ppm / 130 ipm  
300 dpi 65 ppm / 130 ipm  
600 dpi 16 ppm / 32 ipm
- Operating System** Windows XP / Vista / 7 / 8 / 8.1 / 10  
Mac OS X 10.5.X or later
- Interface** USB 3.0, Optional Ethernet (With Network Interface Unit)
- Dimensions** 296 x 169 x 167 mm
- Weight** 3,6kg



# BUSINESS & PHOTO SCANNER

## A3 Sheet-Fed Scanners

### WORKFORCE DS-30000



Scan up to  
A3



Scan  
600 dpi



USB 3.0  
Bus-powered



White LED  
Lighting

**Scanner Type**  
**Sensor Type**  
**Light Source**  
**Optical Resolution**  
**Document Size (Min)**  
**(Max)**  
**Supported Paper Weight**  
**ADF Capacity**  
**Scanning Speed**

A3 sheet-fed, one-pass duplex colour scanner  
Colour Contact Image Sensor (CIS)  
White LED  
600 x 600 dpi  
50.8 x 69 mm  
304.8 x 5.588 mm  
27-413 g/m<sup>2</sup>  
A4 : 120 sheets, A3 : 60 sheets (80 g/m<sup>2</sup>)  
Resolution (A4 Colour/Monochrome)  
200 dpi 70 ppm / 140 ipm  
300 dpi 70 ppm / 140 ipm  
600 dpi 22 ppm / 44 ipm

**Operating System**

Windows Server 2003 / 2008 / 2012 / 2016 /  
2019, Mac OS X 10.6.8 or later  
Windows XP SP3 / Vista / 7 / 8 / 8.1 / 10

**Interface**  
**Dimensions**  
**Weight**

USB 3.0  
371 x 208 x 219 mm  
5.8 kg

### WORKFORCE DS-32000



Scan up to  
A3



Scan  
600 dpi



USB 3.0  
Bus-powered



White LED  
Lighting

**Scanner Type**  
**Sensor Type**  
**Light Source**  
**Optical Resolution**  
**Document Size (Min)**  
**(Max)**  
**Supported Paper Weight**  
**ADF Capacity**

A3 sheet-fed, one-pass duplex colour scanner  
Colour Contact Image Sensor (CIS)  
White LED  
600 x 600 dpi  
50.8 x 69 mm  
304.8 x 5.588 mm  
20 - 413 (80 g/m<sup>2</sup>)  
A4 120 sheets, A3 : 60 sheets  
Delicate Feed Mode : 20 sheets (A4),  
10 sheets (A3)

**Scanning Speed**

Resolution (A4 Colour/Monochrome)  
200 dpi 90 ppm / 180 ipm  
300 dpi 90 ppm / 180 ipm  
600 dpi 26 ppm / 52 ipm

**Operating System**

Windows Server 2003 / 2008 / 2012 / 2016 /  
2019, Mac OS X 10.6.8 or later  
Windows XP SP3 / Vista / 7 / 8 / 8.1 / 10

**Interface**  
**Dimensions**  
**Weight**

USB 3.0  
371 x 167 x 245mm  
6.9 kg

# BUSINESS & PHOTO SCANNER

## A4 Flatbed Business Scanner

### WORKFORCE DS-1630



Scan up to  
A4



Scan  
1200 dpi



RGB LED  
Lighting



USB 2.0  
Bus-powered



<b>Scanner Type</b>	ADF + Flatbed colour image scanner
<b>Sensor Type</b>	Colour Contact Image Sensor (CIS)
<b>Light Source</b>	RGB LED
<b>Optical Resolution</b>	1200 dpi x 1200 dpi
<b>Document Size (Min)</b>	89 x 127 mm (ADF Simplex), 89 x 170 mm (ADF Duplex)
<b>(Max)</b>	216 x 297 mm (Flatbed), 215.9 x 3048 mm (ADF Simplex)
<b>Supported Paper Weight</b>	50 - 120 g/m <sup>2</sup>
<b>ADF Capacity</b>	50 sheets (80g/m <sup>2</sup> )
<b>Scanning Speed</b>	Flatbed (colour) 200-300 dpi approx. 7.0 sec, 1.4 msec/line 600 dpi approx. 26 sec, 3.2 msec/line ADF (colour) 200-300 dpi 25 ppm / 10 ipm 600 dpi 9.0 ppm / 6.0 ipm
<b>Operating System</b>	Microsoft Windows XP (Home / Professional / Professional x64) / Vista (32-bit / 64-bit) / 7 (32-bit/64-bit), Mac OS X 10.4.11 or later
<b>Interface</b>	USB 3.0
<b>Dimensions</b>	450x318x121mm
<b>Weight</b>	4.1kg

### WORKFORCE DS-6500



Scan up to  
A4



Scan  
1200 dpi



USB 3.0  
Bus-powered



White LED  
Lighting



<b>Scanner Type</b>	A4 Flatbed colour image scanner with duplex ADF
<b>Sensor Type</b>	4 Line Colour CCD
<b>Light Source</b>	White LED
<b>Optical Resolution</b>	1200 dpi x 1200 dpi
<b>Document Size (Min)</b>	100 mm x 148 mm
<b>(Max)</b>	215.9 mm x 1016 mm
<b>Supported Paper Weight</b>	50 - 128 g/m <sup>2</sup> (<A6 60 - 190 g/m <sup>2</sup> )
<b>ADF Capacity</b>	100 sheets (80 g/m <sup>2</sup> )
<b>Scanning Speed</b>	Flatbed (colour 24-bit) 300 dpi approx. 8.0 sec, 0.6 msec/line 600 dpi approx. 22 sec, 1.69 msec/line ADF (colour 24-bit) 200-300 dpi 25 ppm / 50 ipm 600 dpi 4 ppm / 8 ipm
<b>Operating System</b>	Microsoft Windows XP (Home / Professional / Professional x64) / Vista (32-bit/64-bit) / 7 (32-bit/64-bit), Mac OS X 10.4.11 or later
<b>Interface</b>	Hi-Speed USB 2.0, Ethernet (Optional)
<b>Dimensions</b>	217 x 495 x 360 mm
<b>Weight</b>	9.8 kg

# BUSINESS & PHOTO SCANNER

## A4 Flatbed Business Scanner

### WORKFORCE DS-7500



Scan up to  
A4



Scan  
1200 dpi



USB 2.0  
Bus-powered



White LED  
Lighting



#### Scanner Type

A4 Flatbed colour image scanner with duplex ADF

#### Sensor Type

4 Line Colour CCD

#### Light Source

White LED

#### Optical Resolution

1200 dpi x 1200 dpi

#### Document Size (Min)

100 mm x 148 mm

#### (Max)

215.9 mm x 1016 mm

#### Supported Paper Weight

50 - 128 g/m<sup>2</sup> (<A6 60 - 190 g/m<sup>2</sup>)

#### ADF Capacity

100 sheets (80 g/m<sup>2</sup>)

#### Scanning Speed

Flatbed (colour 24-bit)

300 dpi approx. 8.0 sec, 0.6 msec/line

600 dpi approx. 22 sec, 1.69 msec/line

ADF (colour 24-bit)

200-300 dpi 40 ppm / 80 ipm

600 dpi 8 ppm / 13 ipm

#### Operating System

Microsoft Windows XP (Home / Professional

/ Professional x64) / Vista (32-bit/64-bit) /

7 (32-bit/64-bit), Mac OS X 10.4.11 or later

Hi-Speed USB 2.0, Ethernet (Optional)

#### Interface

#### Dimensions

217 x 495 x 360 mm

#### Weight

9.8 kg

## A3 Flatbed Business Scanner

### WORKFORCE DS-50000



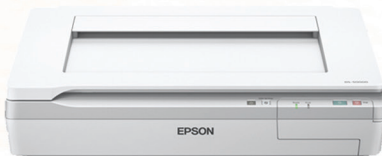
Scan up to  
A3



Scan  
600 dpi



USB 2.0  
Bus-powered



#### Scanner Type

A3 Flatbed colour image scanner

#### Sensor Type

4 Line Colour CCD

#### Light Source

White LED

#### Optical Resolution

600 dpi x 600 dpi

#### Document Size (Max)

A3 (11.7" x 17")

#### Scanning Speed

Flatbed (colour 24-bit)

300 dpi approx. 4.0 sec, 0.351 msec/line

600 dpi approx. 10 sec, 0.702 msec/line

#### Operating System

Microsoft® Windows XP (Home /

Professional / Professional x64) / Vista

(32-bit/64-bit) / 7 (32-bit/64-bit),

Mac OS X 10.4.11 or later

Hi-Speed USB 2.0, Ethernet (Optional)

#### Interface

#### Dimensions

640x468x156mm

#### Weight

14.8 kg

# BUSINESS & PHOTO SCANNER

## WORKFORCE DS-60000



Scan up to A3



Scan 600 dpi



USB 2.0 Bus-powered



White LED Lighting



- Scanner Type** A3 Flatbed colour image scanner with ADF
- Sensor Type** 4 Line Colour CCD
- Light Source** White LED
- Optical Resolution** 600 dpi x 600 dpi
- Document Size (Min)** 68 mm x 120 mm
- (Max)** 297 mm x 2540 mm
- Supported Paper Weight** 35 - 128 g/m<sup>2</sup> (<A6 60 - 190 g/m<sup>2</sup>)
- ADF Capacity** 200 sheets (80 g/m<sup>2</sup>)
- Scanning Speed** Flatbed (colour 24-bit)  
300 dpi approx. 4.0 sec, 0.351 msec/line  
600 dpi approx. 10 sec, 0.702 msec/line  
ADF (colour 24-bit)  
200-300 dpi 40 ppm / 80 ipm  
600 dpi 7.5 ppm / 15 ipm
- Operating System** Microsoft® Windows XP (Home / Professional / Professional x64) / Vista (32-bit/64-bit) / 7 (32-bit/64-bit), Mac OS X 10.4.11 or later
- Interface** Hi-Speed USB 2.0, Ethernet (Optional)
- Dimensions** 640x552x289mm
- Weight** 26.9 kg

## WORKFORCE DS-70000



Scan up to A3



Scan 600 dpi



USB 2.0 Bus-powered



White LED Lighting



- Scanner Type** A3 Flatbed colour image scanner with ADF
- Sensor Type** 4 Line Colour CCD
- Light Source** White LED
- Optical Resolution** 600 dpi x 600 dpi
- Document Size (Min)** 68 mm x 120 mm
- (Max)** 297 mm x 2540 mm
- Supported Paper Weight** 35 - 128 g/m<sup>2</sup> (<A6 60 - 190 g/m<sup>2</sup>)
- ADF Capacity** 200 sheets (80 g/m<sup>2</sup>)
- Scanning Speed** Flatbed (colour 24-bit)  
300 dpi approx. 4.0 sec, 0.351 msec/line  
600 dpi approx. 10 sec, 0.702 msec/line  
ADF (colour 24-bit)  
200-300 dpi 70 ppm / 140 ipm  
600 dpi 12 ppm / 24 ipm
- Operating System** Microsoft® Windows XP (Home / Professional / Professional x64) / Vista (32-bit/64-bit) / 7 (32-bit/64-bit), Mac OS X 10.4.11 or later
- Interface** Hi-Speed USB 2.0, Ethernet (Optional)
- Dimensions** 289 x 640 x 552 mm
- Weight** 26.9 kg

# BUSINESS & PHOTO SCANNER

## A4 Photo Scanners

### PERFECTION V3911



Scan up to  
A4



Scan  
4800 x 4800 dpi



RGB LED  
Lighting



USB 2.0  
Bus-powered



<b>Scanner Type</b>	A4 Flatbed Colour Image Scanner
<b>Light Source</b>	RGB LED
<b>Optical Resolution</b>	4,800 x 4,800 dpi
<b>Output Resolution</b>	50 – 4,800 dpi (in 1 dpi increments)
<b>Document Size</b>	216 x 297 mm
<b>Scanning Speed</b>	Reflective Scanning (Monochrome): 300 dpi; 10 sec Reflective Scanning (24 bit Colour): 300dpi; 10 sec
<b>Operating System</b>	Windows 7 / 8 / 8.1 / 10 / 11, Server 2003 / 2008 / 2012 / 2016 / 2019 Mac OS X 10.11 or later
<b>Interface</b>	USB 2.0
<b>Dimensions</b>	249 x 364 x 39 mm
<b>Weight</b>	1.4 kg

### PERFECTION V850



Scan up to  
A4



Scan  
6400 x 9600 dpi



White LED  
Lighting



USB 2.0  
Bus-powered



<b>Scanner Type</b>	Flatbed colour image scanner
<b>Light Source</b>	White LED
<b>Optical Resolution</b>	Main 6,400 dpi x Sub 9,600 dpi
<b>Output Resolution</b>	25 to 12,800 dpi (in 1 dpi increments)
<b>Document Size</b>	Reflective: Up to 216 x 297 mm Transparency: Up to 203 x 254 mm, 35mm x 18 frames strip film, 35mm x 12 frames mounted film, (6 x 20cm) x 1 frame Medium format, (4" x 5") x 1 frame, Up to 8" x 10" (with film area guide)
<b>Scanning Speed</b>	Reflective Scanning (Preview): 6 sec Reflective Scanning (Monochrome): 300 dpi; 12 sec Reflective Scanning (24 bit Colour): 300dpi; 12 sec
<b>Operating System</b>	Microsoft Windows XP / Vista / 7 / 8 / 8.1 / 10 Mac OS X 10.6.8 or later
<b>Interface</b>	USB 2.0
<b>Dimensions</b>	308 x 503 x 152.5 mm
<b>Weight</b>	6.6 kg

# BUSINESS & PHOTO SCANNER

## A3 Flatbed Business Scanner

### EXPRESSION 13000XL



Scan up to  
A3



Scan  
2400 x 4800 dpi



LED Lighting



<b>Scanner Type</b>	A3 Flatbed Colour Image Scanner
<b>Sensor Type</b>	6-line Colour CCD
<b>Light Source</b>	LED
<b>Optical Resolution</b>	2400 x 4800 dpi
<b>Output Resolution</b>	50 - 6400 dpi (1 dpi increments)
<b>Document Size (Max)</b>	310 x 437 mm (12.2 x 17.2") (Flatbed) 309 x 420 mm (12.2 x 16.5") (TPU)
<b>Film Capacity</b>	35 mm film x 48 Frames (Strip Film Holder) 35 mm film x 30 Frames (Mounted Film Holder)
<b>Scanning Speed</b>	A4 300 dpi Colour 12 sec, 300 dpi BW 12 sec
<b>Operating System</b>	Windows XP / Vista / 7 / 8 / 8.1 / 10 / Server 2003/2008/2012, Mac OS X 10.6.8 or later
<b>Interface</b>	USB 2.0
<b>Dimensions</b>	656 x 458 x 158 mm
<b>Weight</b>	14.3 kg

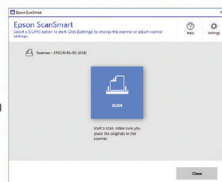
## Manage your Documents/Photos Effortlessly

### Epson ScanSmart\*

#### Photo

Large originals can be scanned and stitched into a single image with Epson ScanSmart. This software can also perform automatic enhancements to photos and save your files into a variety of formats.

\*Only applicable to V39 and V850



#### Document

Simplify your workflow with Epson ScanSmart. Review and edit your scans to rotate, delete, reorder or remove unnecessary pages. Save with automatic file and folder name by OCR detection for increased productivity.

\*Only applicable to ES-50 and ES-60W

### Epson DocumentScan App

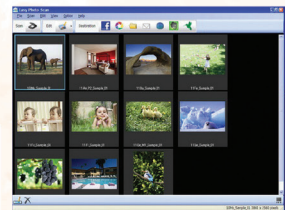


Scan documents with your mobile devices and share it via email, through other apps or save it to selected cloud services such as Box, Dropbox, Evernote®, Google® Drive™ and Microsoft® OneDrive®.

### Easy Photo Scan

Through a simple user interface, users can easily scan, view, edit, save and transfer scanned documents via Easy Photo Scan. 8 simple photo editing functions such as Rotation, Auto and Manual Enhance, Soft Focus and Red Eye Correction are also available for users to enhance and correct their photos as desired. The preview mode and thumbnail mode allow users to easily choose, edit and preview photos within the application.

Post-scan destinations, including local folder, Web Folder, email, Facebook, Picasa™, Evernote® and SugarSync®, are easily accessible through the software.



### Document Capture Pro\*\*



#### Document Capture PRO

Easily scan, view, edit, save and transfer scanned documents. The software recognises barcodes, characters and blank pages in scanned documents for batch separation. It allows you to create up to 30 customised job settings, with the option to assign shortcuts of the scan jobs to the scanner's operation panel to simplify scan workflow. With the built-in OCR capability, searchable PDF files can be created and documents can be saved into editable Microsoft Office formats. In addition, device and documents can be secured through password protection, by locating and tracking documents using the Advanced Log function.

\*\*Limited functionality for Mac version of Document Capture software.

### Document Capture Pro Server\*\*\*



#### Document Capture Pro Server

Document Capture Pro Server helps to centralise your scanning and manage your fleet of scanners without the need to install drivers on individual computers.

Document Capture Pro Server - Authentication Edition secures your scanner by limiting usage based on user list. Link the scanner to your directory services for automatic syncing of the user list and the Email server to enable Scan to Email, alerts, and reporting functions.

\*\*\*Only for Windows Server OS.

### InstantMark OMR Software

An affordable Optical Mark Recognition (OMR) solution that provides fast and accurate detection of data from optical answer sheets used for tests, assessments, surveys and other questionnaires. It allows users to create or use existing form templates for their projects too.

### Presto! Bizcard 5

A business card management solution that keeps a digital database of your business contacts. Information is extracted from the business cards by OCR.

# BUSINESS & PHOTO SCANNER

## Scanner Functions

### Photo

#### Photo Enhancement

Inject new life into faded films and photos. Restore original colours of faded photos to make them look as good as new with colour restoration.



Before Colour Restoration



After Colour Restoration

#### Built-in Transparency Unit with Film Holder

Selected Epson photo scanners feature a built-in transparency unit with film holder which allows users to conveniently digitise precious and fragile photo films and slides.



### Document

#### Text Enhancement

Improves text recognition when scanning text documents, whether in colour, greyscale or black-and-white. Removes background for better clarity, which is especially useful for double-sided printed documents.



Text Enhancement OFF



Text Enhancement ON

#### Book Spine Correction

Scans are corrected for shadow and curvature around book spines for better readability and clarity of texts and images.

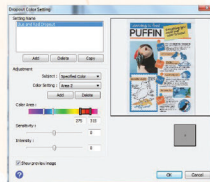


#### Document Skew Correction

Automatically adjusts and straightens scanned images.

#### Colour Enhancement & Colour Dropout

Remove or enhance the visibility of ink signatures such as "Confidential" and "Urgent" stamps. Users can pick one of the preset colours, all colours except black), or use the customised settings to dropout or enhance up to 5 colours of your choice with a single scan. Up to 10 preset colours can be saved for reuse.



#### Paper Protection Function

Upon detection of abnormal paper feeding or stapled/folded paper, the paper feed will be stopped immediately, which prevents damage to your important documents.



#### Epson OCR Feature

This OCR add-on allows users to create searchable PDF files and automatically straighten and orientate documents based on character recognition.

#### PDF Security

Advanced PDF Security features are bundled with document scanners to prevent confidential documents from being accessed, edited or printed by unauthorised users. Passwords can be used to secure the PDF files.

#### Automatic Feeding Mode

The Automatic Feeding Mode enables large volumes of documents to be scanned continuously. In addition, this mode allows you to scan documents one at a time without needing to arrange them by size and they will be saved into a single PDF.



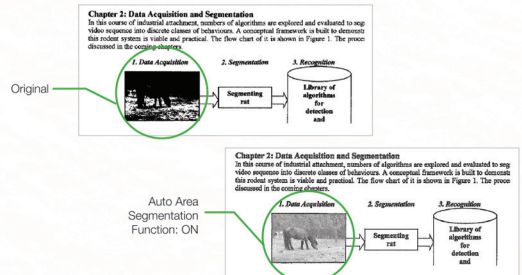
#### Double Feed Detection Skip Function

Activate the Double Feed Detection Skip function to scan documents with stickers and labels.



#### Auto Area Segmentation (AAS)

This feature is useful when user is performing a black-&-white scan on documents with pictures and graphs. AAS segments a scanned document which has both text and image into 'Text Area' and 'Image Area'. The 'Text Area' is scanned in black-&-white and 'Image Area' is scanned in halftone.



# EPSON

# SPEED UP YOUR BUSINESS WITH RELIABILITY YOU CAN TRUST.

Epson's latest scanner range delivers the speed and reliability for every business need. Equipped with advanced technology exclusive to Epson, these scanners enhance your business productivity, higher volume and faster speed, exceeding expectations.

