



www.epson.co.id/largeformat

COMMERCIAL & INDUSTRIAL PRINTER

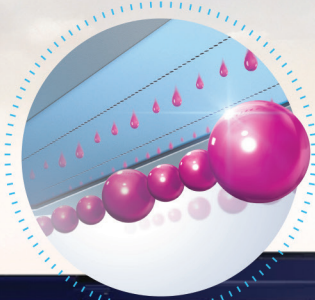
1
TEXTILE
PRINTER BRAND
YEAR 2022
IDC Worldwide Quarterly Industrial
Printer Tracker, 2022Q4



1
SIGNAGE
PRINTER BRAND
YEAR 2022
IDC Worldwide Quarterly Industrial
Printer Tracker, 2022Q4



1 **GRAPHIC**
PRINTER BRAND
YEAR 2022
IDC Worldwide Quarterly Industrial Printer
Tracker, 2022Q4



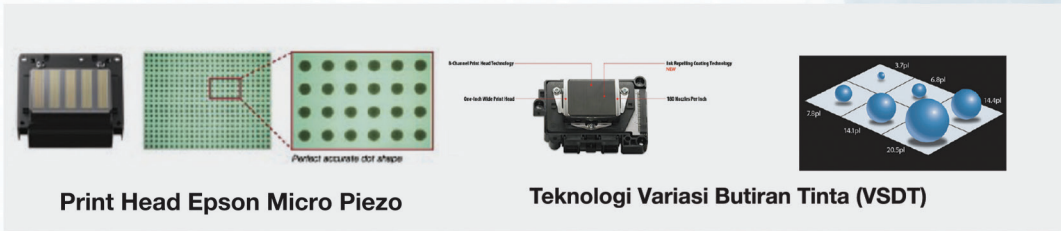
COMMERCIAL & INDUSTRIAL PRINTER

MENGAPA MEMILIH EPSON PRINTER ?

Epson large format printer memastikan hasil warna yang luar biasa sehingga menjadi pilihan yang tepat untuk mendukung berbagai bisnis Anda mulai dari Advertising, fashion, retail dan photography.

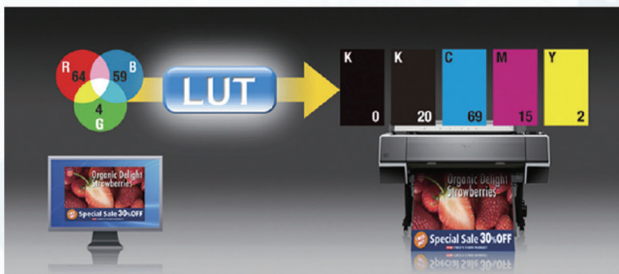
Print head Epson Micro Piezo™

Print head Epson Micro Piezo™ Thin Film Piezo yang khusus dikembangkan untuk printer Large Format Epson, memiliki performa dan daya tahan tinggi dengan 360 micro-fine nozzles untuk setiap warnanya, memberikan bentuk dot (titik) yang sempurna. Teknologi ini menggunakan Variable-Sized Droplet Technology (VSDT) untuk memproduksi butiran tinta dalam berbagai ukuran sampai sekecil 3.5 pico-litres (pl) yang mampu menghemat waktu mencetak dan mengoptimalkan kualitas. Print head juga dilengkapi dengan Ink-Repelling Coating, lapisan pada permukaan print head untuk mengurangi kemungkinan terjadinya penyumbatan pada tinta. Teknologi printhead yang berupa lapisan tipis unik piezo (TFP) yang memadukan teknologi komponen superior dengan teknologi fabrikasi Micro-Electro-Mechanical-System (MEMS) yang berpresisi tinggi. Hasilnya adalah kecepatan cetak dan mutu gambar yang tinggi untuk pemakaian di berbagai kegiatan usaha dan industri.



Epson LUT (Look Up Table) Technology

Dengan teknologi Epson LUT, hasil cetak printer format besar Epson menampilkan gradasi halus, butiran tampak berkurang dan warna tidak dapat berubah, menjadikan hasil cetak indah dan gambar berdefinisi tinggi.



COMMERCIAL & INDUSTRIAL PRINTER

P
P-Series

SurePress Label Printers

SUREPRESS SP-L6534VW



Print Technology

Max Print Resolution

Substrate Width

Substrate Type

Substrate Thickness

Substrate Treatment

Unwinder Capacity

Ink Type

Ink Cartridges

Print Speed

Dimensions

Weight

PrecisionCore linehead inkjet technology

600 x 1200 dpi

80mm to 340mm

Adhesive Paper, Adhesive Film, Single Layer Paper, Single Layer Film

80 to 320 microns

Corona Treatment, Static Ionizer, UV Curing Lamp

600mm dia / 100kg weight / 1,000m length

UV Curable Inks

Black, Cyan, Magenta, Yellow, Digital Varnish,

White, Storage liquid

Productivity Mode: 50m/min, Standard Mode:

30m/min, High Density Mode: 15m/min,

Reverse White Mode: 7.6m/min

4250 (W) x 2290 (D) x 2520 (H) mm

2640 kg

Available with Orange Ink

SUREPRESS SP-L4733AW



Model No

Printing Technology

Ink Type

Ink cartridge

Image size

Print speed

Substrate thickness

Substrate width

Substrate support

Unwinder capacity (Max.)

Dimensions of Press (WxDxH)

Dimensions of Press and Rewinder (WxDxH)

Weight of Press

Weight of Rewinder

Network connectivity

Power requirements

Temperature (Operating)

Relative Humidity (Operating)

Max. sound level (Operating)

SurePress L 4733AW

Epson MicroPiezo inkjet technology

SurePress AQ Ink T4 (SurePress AQ)

Black, Uncoated Black, Cyan, Magenta, Yellow,

Orange, Green, Over print liquid, Moisture liquid

(AW model only: White, Storage liquid)

315.2mm x 914.4mm

Up to 8.2 meter per minute *

80 to 320 µm

80 to 334mm Adjustable to support any width in this range

Standard self adhesive label substrate, Semi gloss, gloss and matte paper stock, BOPP, PET, Yupo and pre laminated film

100kg weight / 1,000m length, 600mm diameter with 76mm (3") inner core

3950 x 1,910mm x 2,020mm

5100 x 1,910mm x 2,020mm

Approximately 1870kg(TBD) including rewriter

Approximately 180kg

Ethernet 1000 base T or higher is recommended

Input voltage range: Rated voltage 10% (180 220V)

Rated voltage: AC (3 phases 3 lines) 200V

18 - 28 derajat celcius

35 - 55% (no condensation)

75dB or less (excluding the alarm sound)

EPSON

GO
BIG



ON THE
DETAILS.

COMMERCIAL & INDUSTRIAL PRINTER

B Series

Surecolor Bulk Series

SURECOLOR SC-B6070


 Versatile Media Handling
0.08 to 0.50 mm thick


Up to 44" thick



Up to 44" Wide*



Ethernet


**Max Print Width
Print Head**

 1118 mm (44")
MicroPiezo TFP® Print Head with Variable-Sized Droplet Technology

**Max Resolution
Min Droplet Size
Ink System
Colours**

 720 dpi x 1440 dpi
3.8pl
Dye Ink
Cyan, Magenta, Yellow, Black
Tank: 1500 ml Pack: 1000 ml

Print Speed

 High Speed / Resolution: 360 x 720 dpi / Passes: 2 = 30.6 m²/h
Production 1 / Resolution: 720 x 720 dpi / Passes: 3 = 22.6 m²/h
Production 2 / Resolution : 720 x 1440 dpi / Passes: 4 = 15.8 m²/h
High Quality / Resolution: 720 x 1440 dpi / Passes: 7/8 = 6.2 m²/h

Paper Size

 Maximum Paper Width: 1118 mm (44")
Minimum Cut-sheet Size: 254 mm (10.0")
Hi-Speed USB 2.0, Ethernet 100BASE-TX / 1000 BASE-T

Interface
OS Compatibility

Windows Vista / 7 / 8 / 8.1 / 10 (64bit) or later, Mac OS 10.6 or later

Memory

512 MB Network: 128 MB

Power Consumption

 Operating: Approx. 65W
Standby: Approx. 20W
Sleep: Approx. 3W (Interface is 1000BASE-T)
Power Off: Less Than 0.4W

SURECOLOR SC-B7070


 Versatile Media Handling
Up to 1 mm


Up to 64" thick



Up to 64" Wide*



Ethernet


**Max Print Width
Print Head**

 1625.6 mm (64")
MicroPiezo TFP® Print Head with Variable-Sized Droplet Technology

**Max Resolution
Min Droplet Size
Ink System
Colours**

 720 dpi x 1440 dpi
5.2pl
Dye Ink
Cyan, Magenta, Yellow, Black
Tank: 1500 ml Pack: 1000 ml

Print Speed

 High Speed / Resolution: 360 x 720 dpi / Passes: 2 = 30.6 m²/h
Production 1 / Resolution: 720 x 720 dpi / Passes: 3 = 22.6 m²/h
Production 2 / Resolution : 720 x 1440 dpi / Passes: 4 = 15.8 m²/h
High Quality / Resolution: 720 x 1440 dpi / Passes: 7/8 = 6.2 m²/h

Paper Size

 Maximum Paper Width: 1118 mm (44")
Minimum Cut-sheet Size: 254 mm (10.0")
Hi-Speed USB 2.0, Ethernet 100BASE-TX / 1000 BASE-T

Interface
OS Compatibility

Windows Vista / 7 / 8 / 8.1 / 10 (64bit) or later, Mac OS 10.6 or later

Memory

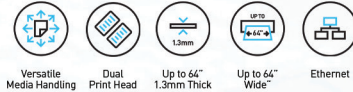
512 MB Network: 128 MB

Power Consumption

 Operating: Approx. 65W
Standby: Approx. 20W
Sleep: Approx. 3W (Interface is 1000BASE-T)
Power Off: Less Than 0.4W

COMMERCIAL & INDUSTRIAL PRINTER

SURECOLOR SC-B9070



**Max Print Width
Print Head**

max. 1,616 mm
Dual PrecisionCore™ TFP® Printhead

**Max Resolution
Min Droplet Size
Ink System
Colours**

2880 dpi x 1440 dpi
4,1 pl
New Formula Dye Ink
Epson Dye Ink
Cyan, Magenta, Yellow, Black

Print Speed

Pouch: 1,000 ml; CISS Tank: 1,500 ml
Draft - 1 Pass: Up to 100 m²/h (360 x 720 dpi)
Speed - 4 Pass: Up to 31 m²/h (720 x 720 dpi)
Production - 6 Pass: Up to 20.5 m²/h (720 x 1440 dpi)

Quality - 8 Pass: Up to 15.3 m²/h (720 x 1440 dpi)
High Quality - 12 Pass: Up to 8.6 m²/h (2880 x 1440 dpi)

Max Quality - 16 Pass: Up to 6.7 m²/h (2880 x 1440 dpi)

Max Quality - 24 Pass: Up to 4.8 m²/h (2880 x 1440 dpi) (Backlit Film)

Paper Size

Media Width: 300 to 1,626 mm (64 inch)
Media Thickness: Up to 1 mm

Interface

Hi-Speed USB 2.0, Ethernet 100BASE-TX / 1000BASE-T

**OS Compatibility
Memory**

Windows Vista / 7 / 8 / 8.1 / 10 (64bit) or later
512 MB Main + 128 MB Network

Power Consumption

Operating: Approx. 440 W (=75 W + 360 W)

Ready: Approx. 320 W (=34 W + 280 W)

Sleep: Approx. 14 W (=13 W + 0.5 W)

Power off: Approx. 1.1 W (=0.6 W + 0.5 W)



F F-Series

Surecolor Fabric Series

SURECOLOR SC-F2130



**Max Print Width
Print Head
Max Resolution
Min Droplet Size
Ink System
Colours
Cartridge Size
Print Speed**

Standard & Medium Grooved Platen: 356 x 406 mm
PrecisionCore™ TFP

1440 dpi x 1440 dpi

12 pl

Epson Ultrachrome® DG

CYMKWW

600ml

4 Colour Configuration; High Speed: 9 sec, Production: 15 sec, High Quality: 27 sec, 5 Colour Configuration

Fast Production: 15 sec (Colour Only), 27 sec (White Only), 52 sec (White + Colour), Production: 27 sec (Colour Only), 49 sec (White Only), 87 sec (White + Colour)

Quality: 50 sec (Colour Only), 111 sec (White Only), 171 sec (White + Colour)

4 Colour Configuration; High Speed: 9 sec, Production: 15 sec, High Quality: 27 sec, 5 Colour Configuration

Fast Production: 15 sec (Colour Only), 27 sec (White Only), 52 sec (White + Colour), Production: 27 sec (Colour Only), 49 sec (White Only), 87 sec (White + Colour)

Quality: 50 sec (Colour Only), 111 sec (White Only), 171 sec (White + Colour)

Rear High Speed USB 2.0 & Ethernet

100Base-T/1000Base-T

Windows & Mac Compatible

512 MB Main + 128MB Network

55W Operating, 10W Sleep

985 W x 490 H x 1,425 mm D

84kg

Interface

OS Compatibility

Memory

Power Consumption

Dimension

Weight



COMMERCIAL & INDUSTRIAL PRINTER

F-Series Surecolor Fabric Series

SURECOLOR SC-F3030

Dual
Print HeadBulk Ink
SolutionUp to 29.5 mm
thicknessSelf Repair
FunctionDirect To
Garment

Max Print Width	406 x 508 mm (using optional Large Platen)
Print Head	PrecisionCore Micro TFP print head x 2)
Max Resolution	1,200 x 1,200 dp
Min Droplet Size	12.1 pl
Ink System	Epson Ultrachrome® DG
Colours	CYMKWW
Cartridge Size	1500ml
Print Speed	Fast 14s (Colour Only), 26s (White + Colour) Production: 21s (Colour Only), 40s (White + Colour) Quality: 36s (Colour Only), 47s (White + Colour) High Quality : 48s (Colour only) , 70s (White + Colour)
Interface	Rear High Speed USB 2.0 & Ethernet 100Base/T1000 Base- T/100 Base Front panel USB for file storage &Uploading (FAT32 format)
OS Compatibility	Windows & Mac Compatible.
Memory	4GB
Power Consumption	168 W Operating, 111W Ready, 20W Sleep

SURECOLOR SC-F130

Genuine
WarrantyWiFi
ConnectCompact
DesignOutstanding
Print Quality

Paper Width	A4, LTR, Legal
Printhead	PrecisionCore Micro TFP Printhead
Max. Resolution	600 x 1,200 dpi
Ink Type	Dye Sublimation Transfer Ink
Colours	Cyan, Magenta, Yellow, Black
Paper Path	Friction Feed
Print Speed	65 seconds (Default)
Interfaces	Hi-Speed USB *2, Ethernet (10BASE-T / 100BASE-TX), Wi-Fi (IEEE 802.11 b/g/n)
Memory	132 Kbyte (Input Buffer Memory)
Voltage	AC 220 - 240V (withstand voltage AC 400V)
W x D x H	375x503x187mm
Frequency	50/60 Hz
Power Consumption	Operating: Aprox. 13W Ready: Aprox. 4.1W Sleep: Aprox. 0.7W
Weight	Aprox. 4.6 kg (without ink bottle)
Warranty	1 Year/6000 sheets, Whichever comes first

COMMERCIAL & INDUSTRIAL PRINTER

SURECOLOR SC-F530



Printer Width	24"
Print Head	PrecisionCore TFP Printhead
Maximum Resolution	2400 x 1200 dpi
Ink System	Epson Genuine Dye-Sublimation Ink
Colours	Cyan, Magenta, Yellow, Black
Print Speed	Production (2 pass), For Fabric: Up to 62 sec / 21 m ² (600 x 1200 dpi), Production (7 pass): For Fabric & Rigid: Up to 208 sec / 7.5 m ² (1200 x 1200 dpi), Production (12 pass), For Fabric & Rigid: Up to 350 sec / 4.5 m ² (2400 x 1200 dpi)
Interface	USB 2.0 Hi-speed, Ethernet 100BASE-TX / 1000BASE-T
OS Compatibility	Windows 10 / 8.1 / 8 / 7 / Vista / XP, Mac OSx10.6.8 or later
Memory	1 GB
Power Consumption	Operating: Approx. 22W, Ready: Approx. 8W Sleep: Approx. 1.6W, Power Off (Stand by): Approx. 0.2W
Dimension	Storage (W x H x D): 970 mm x 245 mm x 577 mm Printing (W x H x D): 970 mm x 245 mm x 811 mm
Weight	29kg

SURECOLOR SC-F531



Max. Print Width	24 inch
Printhead	PrecisionCore TFP" Printhead
Max. Resolution	2,400 x 1,200 dpi
Min. Droplet Size	4.0pl
Ink Type	Epson Genuine Dye-SUblimat ion Ink
Colours	4 Colours - Cyan, Flourescent Pink, Flourescent Yellow Black
Cartridge Size	Cyan, Magenta, Yellow: 26ml, 50ml ; Black: 50ml , 80ml
Print Speed	Production (2 pass), For Fabric: Up to 62 sec / 21 m ² (600 x 1200 dpi) ; Production (7 pass): For Fabric & Rigid: Up to 208 sec / 7.5 m ² (1200 x 1200 dpi) Production (12 pass), For Fabric & Rigid: Up to 350 sec / 4.5 m ² (2400 x 1200 dpi)
Interface	Super-Speed USB 100BASE-TX / 1000BASE-T / IEEE802.11 b/g/n
Memory	1 GB
Power Consumption	Ready: Approx. 8W; Sleep: Approx. 1.6 W Operating: Approx. 28W; Power Off: Approx 0.2W
Dimensions	970 x 505 x 230 (WxDxH)
Weight	29 kg (without ink cartridges)

COMMERCIAL & INDUSTRIAL PRINTER

F Series Surecolor Fabric Series

SURECOLOR SC-F7270



Max Print Width	64 inches (1625.6mm)
Print Head	10 channel PrecisionCore™ TFP with VSDT
Max Resolution	720 dpi x 1440 dpi
Ink System	Epson Ultrachrome® DS
Type	Dye Sublimation
Colours	C+Y+M+Bk / C+Y+M+HDK
Cartridge Size	4 x 1.5L
Print Speed	Normal Mode Draft: 58.9 m ² /hr 1 Pass 360 x 720dpi Normal Mode Fast Production: 30.3m ² /hr; 2 Pass 720 x 720 dpi; Normal Mode Production 1: 22.2m ² /hr 3 Pass 720 x 720dpi; HQ Mode Production 1: 13.8m ² /hr 4 Pass 720 x 720dpi
Paper Size	Thickness 0.08-1mm (75 gsm or greater) Width 300-1625.6 mm
Interface	High Speed USB 2.0 & Ethernet 100Base-T/ 1000Base-T
OS Compatibility	Windows 10 / 8.1 / 8 / 7 (32/64bit) or later (64bit required for Edge Print); Mac OS X 10.7 Lion or later
Memory	512 MB Main + 128MB Network
Power Consumption	460W Operating (heater on), 10W Sleep (heater off, 1000Base-T Interface)
Dimensions (W x D x H)	2620 x 1013 x 1314 mm (W x D x H)
Weight	274kg

SURECOLOR SC-F6430/H



**NEW
PRODUCT**



Max Print Width	44 inch
Print Head	PrecisionCore MicroTFP Printhead
Max Resolution	600 x 1,200 dpi
Ink System	SC-F6430 UltraChrome DS Ink (Cyan, Magenta, Yellow, High Density Black) SC-F6430H UltraChrome DS 6 Ink (Cyan, Magenta, Yellow, High Density Black, Light Cyan, Light Magenta, Fluorescent Yellow, Fluorescent Pink, Orange, Violet)
Type	Dye Sublimation
Ink Capacity	4 x 1.5L Continuous Ink Supply System (CISS)
Refill	1.6 L
Paper Size	Thickness Up to 0.5 mm Width 254 mm to 1,118 mm (10" to 44")
Interface	Super Speed USB, 100BASE-TX/1000BASE-T
Memory	1 GB
Power Consumption	80W Operating, 36W Ready, 19W Sleep
Weight	SC-F6430 With Take Up Reel: Approx. 133 kg Without Take Up Reel: Approx. 120 kg SC-F6430H With Take Up Reel: Approx. 140 kg Without Take Up Reel: Approx. 127 kg

COMMERCIAL & INDUSTRIAL PRINTER

SURECOLOR SC-F9430



Max Print Width 64 inch (1625.6 mm)
 Print Head DUAL Epson PrecisionCore™ TFP
 Max Resolution 720 dpi x 1440 dpi
 Min Droplet Size 4 pl
 Ink System Epson Ultrachrome® DS
 Type Epson Sublimation
 Colours Dual CYMHD
 Cartridge Size 8 / 10 x 1.5L Continuous Ink Supply System (CISS)
 Refill 1.1L CYMHDk
 Print Speed

4c Fast Fabric Production:
 360 x 720 dpi (2 Pass) 60.1 m2/hr
 4c Standard Fabric Production :
 720 x 720 dpi (3 Pass) 44.1 m2/hr
 4c HQ Standard Rigid Production :
 720 x 720 dpi (6 Pass) 20.7 m2/hr
 6c Standard Fabric Production (F9430H only):
 720 x 1440 dpi (6 Pass) 21.9m2/hr
 6c HQ Standard Rigid Production (F9430H only):
 720 x 1440 dpi (12 Pass) 10.6m2/hr
 300 - 1626 mm wide x 250 mm diameter, 2"/ 3" core
 High Speed USB 2.0
 Ethernet 100Base-T / 1000Base-T
 Windows 10, 8/8.1, 7 SP1 64bit or later
 512 MB Main + 128 MB Network
 570W Operating / Standby 340W / 14W Sleep
 (1000BASE-T)

Paper Size
Interface

OS Compatibility
Memory
Power Consumption

SURECOLOR SC-F9430H



Max Print Width 64 inch (1625.6 mm)
 Print Head DUAL Epson PrecisionCore™ TFP
 Max Resolution 720 dpi x 1440 dpi
 Min Droplet Size 4 pl
 Ink System Epson Ultrachrome® DS6
 Type Epson Sublimation
 Colours Dual CYMHDk + Single Fp & Fy (F9430H)
 Cartridge Size 8 / 10 x 1.5L Continuous Ink Supply System (CISS)
 Refill 1.1L CYMHDk
 Print Speed

4c Fast Fabric Production:
 360 x 720 dpi (2 Pass) 60.1 m2/hr
 4c Standard Fabric Production :
 720 x 720 dpi (3 Pass) 44.1 m2/hr
 4c HQ Standard Rigid Production :
 720 x 720 dpi (6 Pass) 20.7 m2/hr
 6c Standard Fabric Production (F9430H only):
 720 x 1440 dpi (6 Pass) 21.9m2/hr
 6c HQ Standard Rigid Production (F9430H only):
 720 x 1440 dpi (12 Pass) 10.6m2/hr
 300 - 1626 mm wide x 250 mm diameter, 2"/ 3" core
 High Speed USB 2.0
 Ethernet 100Base-T / 1000Base-T
 Windows 10, 8/8.1, 7 SP1 64bit or later
 512 MB Main + 128 MB Network
 570W Operating / Standby 340W / 14W Sleep
 (1000BASE-T)

Paper Size
Interface

OS Compatibility
Memory
Power Consumption

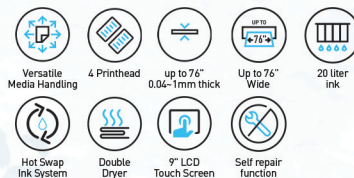
COMMERCIAL & INDUSTRIAL PRINTER

F-Series Surecolor Fabric Series

SURECOLOR SC-F10030

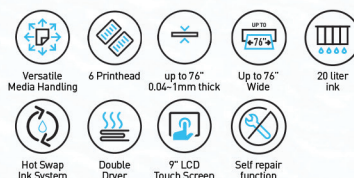


Max Media Width	76 inch (1950mm)
Print Head	FOUR 4.7" Epson PrecisionCore™ TFP
Nozzle Configuration	800 x 4 per head/colour
Maximum Resolution	1200 x 1200dpi
Min Droplet Size	Dye Sublimation Epson Ultrachrome® DS
Colours	CYM + HDK
Supply	DUAL Continuous Ink Supply System (CISS) with auto hot-swap
Refills	Choice of 3L or 10L box type PERFORMANCE
Max Quality	1200 x 1200dpi*4 (9 Pass) 29.3m ² /hr
Size	300-1950mm wide, 250mm max diameter/60Kg max weight
Thickness	0.04-1mm
Control Panel	9" Colour Touch LCD
Interface	High Speed USB 3.0, Ethernet 1000Base-T
Memory	155GBI
Power Supply	2 x 16A, 240V, 50/60 Hz AC
Power Consumption	3.9kW Operating / 221W Sleep / 9.6W Off
Dimensions (W x D x H) Printer	1303mm x 2886mm x 4607mm, 683Kg (without media holders or ink)
Operational Space (W x D x H)	CISS: 877 x 556 x 541mm, 53kg (no ink)
Weight	5.6 x 3.3 x 2.0m recommended 736kg (without ink)



SURECOLOR SC-F10030H

Max Media Width	76 inch (1950mm)
Print Head	six 4.7" Epson Precision Core™ TFP
Colours	CMY + HDK + Fluorescent Pink Fluorescent Yellow or Light Magenta Light Cyan
Dimensions (W x D x H)	196" x 52" x 75" (4,978 mm x 1,303 mm x 1,886 mm)
Weight	Approx. 767 kg (Without ink cartridges)
Printing Dimensions (W x H x D)	5,008 x 1,886 x 1,303 mm
Power Consumption	Operating: Approx. 4.4kw Ready: Approx. 230W Sleep: Approx. 230W Power Off (Stand by): Approx. 9.6 W



COMMERCIAL & INDUSTRIAL PRINTER

Direct-To-Fabric Printer

ML-8000



Print Technology
Number of Print Head
Max Resolution

Print Speed

Power Consumption
Network
Dimensions

Weight

Print
Speed

PrecisionCore Inkjet Technology
8

1,200 x 1,200 dpi (Pigment), 1,200 x 600 dpi
(Reactive, Acid, Disperse)

Print Speed Square : 290 (300 x 600 dpi, 1 pass)1 /
3,122

(300 x 600 dpi, 1 pass)[†]

Print Speed Linear : 193 (300 x 600 dpi, 1 pass)1 / 634
(300 x 600 dpi, 1 pass)[†]

12kVA

USB 3.0 Ethernet 1000BASE-T

Printer: 3,700 (W) x 2,690 (D) x 1,830 (H) mm
(146 x 106 x 72 in), Ink rack (with 10L ink) : 880 (W) x
960 (D) x 790 (H) mm(35 x 38 x 31 in)

Printer : Approx. 2,150 kg (4,740 lb), Ink rack :
Approx. 110 kg (243 lb, not including ink)

290 sqm/h (300x600) dpi, 1 pass

Typical printing speed

155 sqm/h (600x600) dpi, 2 pass

Monna Lisa Evo Tre 16



Print Technology
Number of Print Head
Max Resolution
Print Speed

Humidity
Dimension

Electrical
Weight
Print Speed

PrecisionCore Inkjet Technology
16

1,200 x 1,200 dpi

Draft 1 404 m²/h

Draft 2 270 m²/h

Production 1 221 m²/h

Production 2 171 m²/h

Production 3 135 m²/h

High Quality 1 103 m²/h

High Quality 2 79 m²/h

High Quality 3 63 m²/h

35-80% RH (Condensation)

Printing Machine: Approx. 4,660 (W) x 2,390 (D) x 1,940

(H) mm

Control Box: 620 (W) x 1,220 (D) x 2,070 (H) mm

Ink Rack: 1,240 (W) x 1,300 (D) x 1,220 (H) mm

Printing Machine: AC 3 Phase 400V 50A (50/60 Hz)

4,650 kg

Maximum Printing Speed

434 sqm/h (300x600) dpi, 1 pass

Typical Printing Speed

239 sqm/h (600x600) dpi, 2 pass

161 sqm/h (900x600) dpi, 3 pass

COMMERCIAL & INDUSTRIAL PRINTER

Direct-To-Fabric Printer

Monna Lisa Evo Tre 32



Print Technology
Number of Print Head
Max Resolution
Print Speed

PrecisionCore Inkjet Technology
32

1,200 x 1,200 dpi
Draft 1 692 m²/h
Draft 2 472 m²/h
Production 1 402 m²/h
Production 2 312 m²/h
Production 3 239 m²/h
High Quality 1 187 m²/h
High Quality 2 145 m²/h
High Quality 3 114 m²/h

Humidity
Dimension

35-80% RH (Condensation)
Printing Machine: Approx. 4,610 (W) x 2,040 (D) x 2,070 (H) mm

Electrical
Weight
Print Speed

Control Box: 700 (W) x 1,800 (D) x 2,350 (H) mm
Ink Rack: 1,240 (W) x 1,300 (D) x 1,220 (H) mm
Printing Machine: AC 3 Phase 400V 50A (50/60 Hz)
4,650 kg
Maximum Printing Speed
704 sqm/h (300x600) dpi, 1 pass
Typical Printing Speed
439 sqm/h (600x600) dpi, 2 pass
314 sqm/h (900x600) dpi, 3 pass



P-Series

Surecolor Photographic Series

SURECOLOR SC-P8530D



Technology

PrecisionCore Inkjet Technology, Variable-Sized Droplet Technology

Max Resolution
Min Droplet Size

2,400 x 1,200 dpi
3.5pl

Ink System
Ink Capacity
Colours

UltraChrome Pro 6 Ink
350, 700 ml
Cyan, Magenta, Yellow, Gray, Photo Black, Matte Black

Interface

SuperSpeed USB, 100BASE-TX
/1000BASE-T/IEEE802.11b/g/n/ac, USB memory stick

Power Consumption

Operating: Approx. 70W, Ready: Approx. 32W,
Sleep: Approx. 2.0W, Standby: Approx. 0.3W

Dimension (WxHxD)
Weight

1,848 x 975 x 829 mm
Approx. 155 kg

COMMERCIAL & INDUSTRIAL PRINTER

SURECOLOR SC-P703



Versatile
Media Handling



Up to
1.5mm Thick



Ethernet



Wi-Fi

Max Print Wide Technology	13 inch wide On-demand ink jet (piezo electric), Variable-Sized Droplet Technology
Max Resolution	5760x1440 dpi
Min Droplet Size	1.5pl
Ink System Colours	UltraChrome PRO10 ink Cyan, Vivid Magenta, Photo Black, Matte Black, Gray, Light Gray, Yellow, Vivid Light Magenta, Light Cyan, Violet
Interface	Wired Connection: Super-Speed USB, 10BASE-T/100BASE-TX, Wireless Connection: Wi-Fi 4
Power Consumption	22 W Operating/ 1.1 W Sleep
Dimension (WxDxH)	Close: 515x368x185 mm, Open: 515x769x420 mm
Weight	Main Unit: Approx. 12.6kg (without ink cartridge)

SURECOLOR SC-P903



Versatile
Media Handling



Up to
1.5mm Thick



Ethernet



Wi-Fi

Max Print Wide Technology	17 inch wide On-demand ink jet (piezo electric), Variable-Sized Droplet Technology
Max Resolution	5760x1440 dpi
Min Droplet Size	1.5pl
Ink System Colours	UltraChrome PRO10 ink Cyan, Vivid Magenta, Photo Black, Matte Black, Gray, Light Gray, Yellow, Vivid Light Magenta, Light Cyan, Violet
Interface	Wired Connection: Super-Speed USB, 10BASE-T/100BASE-TX, Wireless Connection: Wi-Fi 4
Power Consumption	24 W Operating/ 1.1 W Sleep
Dimension (WxDxH)	Close: 615x368x199 mm, Open: 615x905x520 mm
Weight	Main Unit: Approx. 14.8kg (without ink cartridge), Option roll unit: 3.1kg

COMMERCIAL & INDUSTRIAL PRINTER

P-Series Surecolor Photographic Series

SURECOLOR SC-P5000



Versatile Media Handling



Up to 1.5mm Thick



Up to 17" Wide



Ethernet



Max Print Width	17 inch (432 mm)
Print Head	PrecisionCore® TFP
Max Resolution	2880 dpi x 1440 dpi
Min Droplet Size	3.5 pl
Ink System	Epson Ultrachrome® HDX
Type	Aqueous all-pigment
Colours	11 (Configurable with Light Light Black OR Violet)
Cartridge Size	200 ml
Print Speed (A2 sheet)	Draft: 360 dpi x 360 dpi 0.5 minutes Normal: 360 dpi x 720 dpi 0.8 minutes Fine: 720 dpi x 720 dpi 1.8 minutes Super Fine: 720 dpi x 1440 dpi 3.6 minutes Super Photo: 2880 dpi x 1440 dpi 7 minutes
Paper Size	8" x 10" (203 x 254 mm) - A2+ (432 x 610 mm) sheets, 203-432 mm wide x 150 mm diameter 3" core / 103 mm diameter 2" core rolls
Interface	High Speed USB 2.0, Ethernet 10Base-T / 100Base-TX / 1000Base-T
OS Compatibility	Mac OS X 10.6.8 or later, Windows 10, 8/8.1, 7, Vista, & Win XP SP1
Memory	256 MB Main and 128 MB Network
Power Consumption	52W Operating / Standby 20W / 5W Sleep (1000BASE-T)
Dimensions (W x D x H)	863 x 766 x 405 mm (Sheet feed & output tray closed)
Weight	52kg (no ink)

SURECOLOR SC-P6000



Versatile Media Handling



Up to 1.5mm Thick



Up to 24" Wide



Borderless Printing



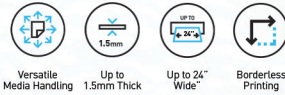
Print Quality 1440dpi



Print Head	PrecisionCore™ TFP printhead, Epson Variable-Sized Droplet Technology
Max Resolution	2880x1440 dpi
Min Droplet Size	3.5 pl
Ink System	Epson UltraChrome HD
Colours	Cyan, Photo Black, Matte Black, Vivid Magenta, Yellow, Light Cyan, Vivid Light Magenta, Light Black, Light Light Black
Paper Path	Friction Feed
Roll Dimensions	254mm-610mm, 2inch-core/3inch-core
Paper Size (w) and Thickness	2inch-core: Max 103mm / 3inch-core: Max 150mm 254mm (10") - 610mm (24"): Roll paper 254mm (10") - 610mm (24"): Cut Sheet 0.08-1.50mm
Borderless	254mm (10in.), 300mm (11.8in.), 329mm (13in.), 406mm (16in.), 432mm (17in.), 515mm (20.3in.), 594mm (23in.), 610mm (24in.)
Interface	Hi-Speed USB, 10BASE-T/100BASE-T/1000BASE-T
Dimension (W x D x H)	1,356 x 667 x 1,218 mm
Weight	Approx. 101kg

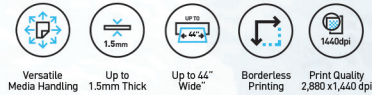
COMMERCIAL & INDUSTRIAL PRINTER

SURECOLOR SC-P6530E



Max Print Width 24 Inch
 Print Head PrecisionCore Micro TFP printhead
 Max Resolution 2400 dpl x 1200 dpl
 Min Droplet Size 3.5pl
 Ink System Ultra Chrome Pro 6 Ink
 Colours 6
 Paper Handling Roll Paper / Friction Head
 Print Speed 111 Sec, A1 Size Premium Glossy
 Printer Interface 1000 BASE-T
 OS Compatibility Mac OS X 10.6.8 or later, Mac os 11 or later
 Memory 4 GB
 Power Consumption Operating approx 75W
 Ready approx 32W
 Sleep approx 2W
 Standby approx 0.3W

SURECOLOR SC-P8000



Print Head PrecisionCore™ TFP printhead,
 Epson Variable-Sized Droplet Technology
 Max Resolution 2880x1440 dpi
 Min Droplet Size 3.5 pl
 Ink System Epson UltraChrome HD
 Colours Cyan, Photo Black, Matte Black, Vivid Magenta, Yellow, Light Cyan, Vivid Light Magenta, Light Black, Light Light Black
 Paper Path Friction Feed
 Roll Dimensions 254mm-1118mm, 2inch-core/ 3inch-core
 2inch-core: Max 103mm/ 3inch-core: Max 150mm
 Paper Size (w) and Thickness 254mm (10") - 1118mm (44"): Roll paper 210mm (A4) - 1118mm (44"): Cut Sheet 0.08-1.50mm
 Borderless 728mm (29in.), 841mm (A0/33in.), 914mm (36in.), 1118mm (44in.) 728mm (29in.), 841mm A0/33in.), 914mm (36in.), 1118mm (44in.)
 Interface Hi-Speed USB, 10BASE-T/100BASE-T/1000BASE-T
 Dimension (W x D x H) 1,864 x 667 x 1,218 mm
 Weight Approx. 135kg

SURECOLOR SC-P7530



Max Print Width 24 inch
 Print Head Micro TFP Printhead
 Max Resolution 2400 dpi x 1200 dpi
 Min Droplet Size 3.5 pl
 Ink System Ultrachrome® Pro12 Pigment Ink
 Colours 12
 Paper Handling Roll Paper / Friction Feed
 Print Speed 97 sec (Level 1) 122 sec (Default) Premium Glossy
 Photo Paper 170 gsm A1 size/ISO
 Super Speed USB, 100 BASE - TX / 1000 BASE - T
 Printer Interface Mac OS X 10.6.8 or later,
 OS Compatibility Windows XP / Vista / 7 / 8 / 8.1 (32/64bit) or later
 Memory 2 GB
 Power Consumption Operating : Approx 85 W
 Ready : Approx 32 W
 Sleep : Approx 3.4 W
 Power Off (Stand by) : Approx 0.3 W

COMMERCIAL & INDUSTRIAL PRINTER

P
P-Series

Surecolor Photographic Series

SURECOLOR SC-P9530



Versatile
Media Handling



Up to
1.5mm Thick



Up to 44"
Wide



Borderless
Printing



Easy
Maintenance



Max Print Width	44 inch
Print Head	Micro TFP Printhead
Max Resolution	2400 dpi x 1200 dpi
Min Droplet Size	3.5 pl
Ink System	Ultrachrome® Pro12 Pigment Ink
Colours	12
Paper Handling	Roll Paper / Friction Feed
Print Speed	219 sec (Level 1) 285 sec (Default) Premium Glossy
Printer Interface	Photo Paper 170 gsm B0 size/ISO USB Interface (Hi-Speed USB/USB, 100 BASE - TX / 1000 BASE - T
OS Compatibility	Mac OS X 10.6.8 or later, Windows XP / Vista / 7 / 8 / 8.1 (32/64bit) or later
Memory	2 GB
Power Consumption	Operating : Approx 110 W Ready : Approx 32 W Sleep : Approx 3.4 W Power Off (Stand by) : Approx 0.3 W

S
S-Series

Surecolor Signage Series

SURECOLOR SC-R5030L



Max Print Width	64 inch
Technology	PrecisionCore inkjet technology
Max Resolution	1,200 x 2,400 dpi With 600 x 600 dpi 8 Half Tone layers
Print Speed	Banner Fast Production Vinyl, Paper & Wall Covering - 21m ² /h (600 x 1200dpi 6 pass) Banner Production Vinyl, Paper & Wall Covering - 15.1m ² /h (1200 x 1200dpi 9 pass) Textile Production - 9.5m ² /h (1200 x 1200dpi 14 pass) Film Production - 5.2m ² /h (1200 x 2400dpi 26 pass)
Ink Type	Resin ink
Colours	Cyan, Magenta, Yellow, Black, Light Cyan, Light Magenta +Optimizer+Mainenance Liquid @ 3000ml
Ink Capacity	USB (Hi-Speed USB), 100BASE-TX/1000BASE-T
Interface	2 GB
Memory	4.6kW Operating/ 220W Ready/ 46W Sleep/ 1.1W Power Off (Stand by)
Power Consumption	Printing : 2,949mm x 1,045mm x 1,774mm Stowed : 2,949mm x 1,045mm x 1,605mm
Dimensions (W x D x H)	449kg
Weight	

COMMERCIAL & INDUSTRIAL PRINTER



Surecolor Signage Series

SURECOLOR SC-V7000

Epson 1st UV Flatbed Printer



Technology	MicroPiezo Inkjet Technology (Technology 1) Variable-Sized Droplet Technology (Technology 2)
Print Head	MicroPiezo Printhead
Nozzle Configuration	11,520 nozzles (180 nozzles x 8 lines x 8 head)
Max Resolution	720 x 1,440 dpi
Print Speed	Colour High Speed: 360 x 720 dpi, with speed 43.1 m/h
Curing Method	LED-UV type
Ink Type	UV Curable Ink
Colours	Cyan, Magenta, Yellow, Black, Light Cyan, Light Magenta, Gray, Red, White, Varnish
Ink Capacity	1,000 ml (Ink Bottle)
Max Printing Area	Max. 2,500 x 1,250 mm
Max Media Size	Max. 2,500 x 1,250 mm
Interface	Super-Speed USB (Type-B)
Power Consumption	Operating: Approx. 4.8kW
Dimensions (W x D x H)	4,635mm x 2,768mm x 1,730mm
Weight	1,370 kg (With ink cartridges)

SD-10

Digital Colour Spectrophotometer



Technology	Spectroscopic Device
Spectral Range	400 - 700nm
Sampling Interval	Colour Measurement
Photometric Range	10 nm (Interpolation by software)
Light Source	LED (Including UV)
Measurement Conditions	M0: Including UV light component, ISO 13655:2017 measurement condition M0 M1e: D50 - Including UV light component, measurement conditions equivalent to ISO 13655:2017 measurement condition M1 (Measurement conditions held with a radiant power at all wavelengths from 400 to 700 nm, and power ratios in the 300 to 400 nm and 400 to 500 nm regions similar to D50) M2: Without UV, ISO 13655:2017 measurement condition M2
Calibration	White reference built in the sensor cover
Scan Length	400mm
Interfaces	USB Type-C, USB 2.0 Full-Speed BLE Bluetooth Low Energy
Dimensions (W x D x H)	35 x 80 x 80 mm (Shutter Closed) 35 x 80 x 77.6 mm (Shutter Opened)
Weight	Approx. 190g

COMMERCIAL & INDUSTRIAL PRINTER

S Surecolor Signage Series

F

SURECOLOR SC-S40670

Versatile
Media HandlingUp to
1.5mm
ThickUp to 64"
Wide

Max Print Width	64 inch
Print Head	PrecisionCore™ TFP® Printhead
Max Resolution	1440 dpi x 1440 dpi
Min Droplet Size	4.2 pt
Ink System	Epson Ultrachrome® GS3
Type	Eco-Solvent Based
Colours	CMYK
Cartridge Size	4 x 700 ml
Print Speed	Draft: 58.4m ² /hr (360 dpi x 720 dpi 1 pass) Billboard: 29.4m ² /hr (720 dpi x 720 dpi 2 pass) Banner: 16.6m ² /hr (720 dpi x 720 dpi 4 pass) Vinyl: 10.5m ² /hr (720 dpi x 1440 dpi 6 pass) Film: 3.5m ² /hr (1440 dpi x 1440 dpi 16 pass)
Paper Size	Single Roll, 2" or 3" core, 250 mm max outer diameter & 45kg max weight Sizing; 300 to 1626 mm wide, 500 mm min length, 1 mm max thickness
Interface	Hi-Speed USB 2.0, 100BASE-TX / 1000BASE-T
RIP Compatibility	Supplied with Epson Edge Print and supports a wide range of 3rd party applications
Memory	512 MB
Power Consumption	480W Operating / 330W Ready/ 12W Sleep
Dimensions (W x D x H)	2,620 x 1,338 x 880 mm (W x H x D)
Weight	279kg

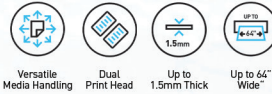
SURECOLOR SC-S60670

Versatile
Media HandlingDual
Print HeadUp to
1.5mm
ThickUp to 64"
Wide

Max Print Width	64 inch
Print Head	Dual PrecisionCore™ TFP® Printhead
Max Resolution	1440 dpi x 1440 dpi
Min Droplet Size	4.2 pt
Ink System	Epson Ultrachrome® GS3
Type	Eco-Solvent Based
Colours	CMYK
Cartridge Size	2 x 4 x 700 ml
Print Speed	Max Speed: 95.3m ² /hr (360 dpi x 720 dpi 1 pass) Billboard: 52.3m ² /hr (720 dpi x 720 dpi 2 pass) Banner: 29.4m ² /hr (720 dpi x 720 dpi 4 pass) Vinyl: 17.6m ² /hr (720 dpi x 1440 dpi 6 pass) Film: 6.8m ² /hr (1440 dpi x 1440 dpi 16 pass)
Paper Size	Single Roll, 2" or 3" core, 250 mm max outer diameter & 45kg max weight Sizing; 300 to 1626 mm wide, 500 mm min length, 1 mm max thickness
Interface	Hi-Speed USB 2.0, 100BASE-TX / 1000BASE-T
RIP Compatibility	Supplied with Epson Edge Print and supports a wide range of 3rd party applications
Memory	512 MB Main + 128 MB Network
Power Consumption	745W Operating / 445W Ready/ 13W Sleep
Dimensions (W x D x H)	2,620 x 1,338 x 972 mm (W x H x D)
Weight	291kg

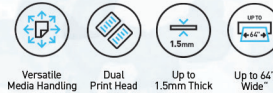
COMMERCIAL & INDUSTRIAL PRINTER

SURECOLOR SC-S60670L



Max Print Width	64 inch
Print Head	Dual PrecisionCore™ TFP® Printhead
Max Resolution	1440 dpi x 1440 dpi
Min Droplet Size	4.2 pl
Ink System	Epson Ultrachrome® GS3
Type	Eco-Solvent Based
Colours	Dual C, M, Y, K (Choice of Standard)
Cartridge Size	2 x 4 x 1500 ml
Print Speed	Max Speed: 95.3m ² /hr (360 dpi x 720 dpi 1 pass) Billboard: 52.3m ² /hr (720 dpi x 720 dpi 2 pass) Banner: 29.4m ² /hr (720 dpi x 720 dpi 4 pass) Vinyl: 17.6m ² /hr (720 dpi x 1440 dpi 6 pass) Film: 6.8m ² /hr (1440 dpi x 1440 dpi 16 pass) Single Roll, 2" or 3" core, 250mm max outer diameter & 45kg max weight Sizing; 300 to 1626mm wide, 500mm min length, 1mm max thickness
Interface	High Speed USB & Ethernet 100Base-T / 1000Base-T
RIP Compatibility	Supplied with Epson Edge Print and supports a wide range of 3rd party applications
Memory	512 MB Main + 128 MB Network
Power Consumption	820W
Dimensions (W x D x H)	2,766 x 1,671 x 1,147mm
Weight	331kg w/ink

SURECOLOR SC-S80670



Max Print Width	64 inches
Print Head	DUAL Print Head PrecisionCore™ TFP® Printhead
Max Resolution	1440 dpi x 1440 dpi
Min Droplet Size	4.2 pl
Ink System	Epson Ultrachrome® GS3 & GS3+RED
Type	Eco-Solvent Based
Colours	C, M, Y, K, Lc, Lm, Lk, Or, Rd + (optional) White or Metallic Silver
Cartridge Size	9 x 700 ml + optional 1 x (600 ml Wht or 350 ml Mtl)
Print Speed	Max Speed(9c): 95.1m ² /hr (360 dpi x 360 dpi 1 pass) Billboard (9c): 31.6m ² /hr (720 dpi x 720 dpi 4 pass HS) Banner (9c): 18.2m ² /hr (720 dpi x 720 dpi 6 pass)
Paper Size	Input Format Single Roll with 2" or 3" core, 250 mm max outer diameter & 45kg max weight Sizing 300 to 1626 mm wide, 500 mm min length, 1 mm max thickness
Interface	High Speed USB 2.0 & Ethernet 100Base-T / 1000Base-T
RIP Compatibility	Supplied with Epson Edge Print and supports a wide range of 3rd party applications
Memory	2 GB, Network: 512MB +128MB
Power Consumption	745W Operating/380W Ready/14W Sleep
Dimensions (W x D x H)	2,620 x 1,338 x 880 mm (W x H x D)
Weight	284kg

COMMERCIAL & INDUSTRIAL PRINTER

S S-Series

Surecolor Signage Series

SURECOLOR SC-S80670L



Versatile Media Handling



Dual Print Head



Up to 1.5mm Thick



Up to 64" Wide



Max Print Width	64 inches
Print Head	Dual PrecisionCore™ TFP® Printhead
Max Resolution	1440 dpi x 1440 dpi
Min Droplet Size	4.2 pl
Ink System	Epson Ultrachrome® GS3 & GS3+RED
Type	Eco-Solvent Based
Colours	C, M, Y, K, Lc, Lm, Lk, Or, Rd + (optional) White or Metallic Silver
Cartridge Size	9 x 1500 ml + optional 1 x (all color 1500ml) 1500ml White and 500ml Silver Metallic
Print Speed	High Speed: 52.3m ² /hr (360 dpi x 720 dpi 2 pass)
Paper Handling	Rear Roll Feed / Auto take-up reel
Paper Size	Input Format Single Roll with 2" or 3" core, 250 mm max outer diameter & 45kg max weight Sizing 300 to 1626 mm wide, 500 mm min length, 1 mm max thickness
Interface	High Speed USB & Ethernet 100Base-TX / 1000Base-T
RIP Compatibility	Supplied with Epson Edge Print and supports a wide range of 3rd party applications
Memory	2GB, Network: 128 MB
Power Consumption	640W
Dimensions (W x D x H)	2,766 x 1,671 x 1,090 mm
Weight	326kg w/ink

D D-Series

Surelab Photolab Series

SURELAB SL-D1030



Epson Genuine Inks



Environment Friendly



Print Head	Micro Piezo Printhead
Max Resolution	1,440 x 720 dpi
Min Droplet Size	2.5 pl
Ink System	Epson UltraChrome D6r-S Dye Ink
Ink Capacity	250ml
Colours	Cyan, Magenta, Yellow, Light Cyan, Light Magenta, Black
Paper Size	Width: 89mm – 210mm ; Length: 148mm – 297mm
Print Size	Roll: Max. 1,000mm, Min. 50mm / Manual Feed: 1,000mm / Auto Sheet Feeder (ASF): 297mm
Interface	Hi-Speed USB, 100BASE-TX/10BASE-T, IEEE802.11b/g/n, Wi-Fi
OS Compatibility	Windows® 10, Windows® 8.1 for each 32bit/64bit, Macintosh Mac OS X (10.9.5 or later), Mac OS 11.X
Power Consumption	Operating: Approx. 80W / Ready : Approx. 14W / Sleep: Approx. 1.2W / Standby: Approx. 0.2W
Dimensions (W x D x H)	Single-sided Model: 460 x 683 x 359 mm Double-sided Model: 460 x 747 x 441 mm
Weight	Single-sided model: 17.6kg Double-sided model: 23.1kg Main unit: 17.6kg, Duplex Feeder: 5.5kg

COMMERCIAL & INDUSTRIAL PRINTER

SURELAB SL-D3000



Print Method	Epson Micro Piezo™ on-demand inkjet with Variable Sized Droplet Technology
Max Resolution	1440 x 1440dpi (Gloss & Lustre) / 720 x 720 dpi (Matte)
Min Droplet Size	1.5pl
Ink System	Epson UltraChrome D6 Ink
Colours	Colours 6 (Cyan, Yellow, Magenta, Black, Light Cyan, Light Magenta) 700 ml per colour
Media Handling	Single Roll Model Dual Roll Model Rear roll up to 305mm / 12" media width Rear roll up to 305mm / 12" media width Front roll up to 210mm / 8" media width Auto-Switch between front / rear rolls
Printer Interface	USB 2.0 Hi-Speed
OS Compatibility	Microsoft Windows XP Professional (SP3), Windows 7 Professional (32- or 64-bit) 2.8 GHz Intel® Core 2 Duo or better
Memory	-
Power Consumption	500W Operating/ 60W Standby

SURELAB SL-D530



Print Method	Micro Piezo Inkjet Technology with Variable Sized Droplet Technology
Max Resolution	1440 x 720dpi (High Quality) / 720 x 720 dpi (Standard) / 720x360 (Draft)
Max Droplet Size	2.5pl
Ink System	Epson UltraChrome D6r-S Dye Ink
Colours	Colours 6 (Cyan, Magenta, Yellow, Light Cyan, Light Magenta, Black) 70 ml per colour
Media Handling	Auto Sheet Feeder Width: 89mm - 102mm ; Length: 127mm - 152mm Auto Sheet Feeder: 3.5" x 5", 4" x 6" (100 sheets)
Printer Interface	Hi-Speed USB, 100BASE-TX/10BASE-T, IEEE802.11b/g/n
OS Compatibility	Windows®11, Windows®10, Windows®8.1 for each 32bit/64bit, Macintosh Mac OS X (10/9/5 or later), Mac OS 11.X
Memory	0.5 GB
Power Consumption	18W Operating/ 3.8W Ready/1.4W Sleep/ 0.2W Standby

COMMERCIAL & INDUSTRIAL PRINTER

Commercial & Industrial Printer Consumable

Order Code	Description	Product	Order Code	Description	Product
C13T738100	Black	SC-B6070	C13T824800	Epson UltraChrome HD 350ml Matte Black Pigment Ink Cartridge	SC-P6000
C13T738200	Cyan		C13T824900	Epson UltraChrome HD 350ml Light Light Black Pigment Ink Cartridge	
C13T738300	Magenta		C13T824100	Epson UltraChrome HD 350ml Photo Black Pigment Ink Cartridge	SC-P8000
C13T738400	Yellow		C13T824200	Epson UltraChrome HD 350ml Cyan Pigment Ink Cartridge	
C13T7904100	Black	SC-B9070	C13T824300	Epson UltraChrome HD 350ml Vivid Magenta Pigment Ink Cartridge	
C13T7904200	Cyan		C13T824400	Epson UltraChrome HD 350ml Yellow Pigment Ink Cartridge	
C13T7904300	Magenta		C13T824500	Epson UltraChrome HD 350ml Light Cyan Pigment Ink Cartridge	
C13T7904400	Yellow		C13T824600	Epson UltraChrome HD 350ml Vivid Light Magenta Pigment Ink Cartridge	
C13T725100	Epson UltraChrome DG Ink - Black 600ml	SC-F2130	C13T824700	Epson UltraChrome HD 350ml Light Black Pigment Ink Cartridge	
C13T725200	Epson UltraChrome DG Ink - Cyan 600ml		C13T824800	Epson UltraChrome HD 350ml Matte Black Pigment Ink Cartridge	
C13T725300	Epson UltraChrome DG Ink - Magenta 600ml		C13T824900	Epson UltraChrome HD 350ml Light Light Black Pigment Ink Cartridge	
C13T725400	Epson UltraChrome DG Ink - Yellow 600ml		C13T824100	Epson UltraChrome HD 350ml Photo Black Pigment Ink Cartridge	SC-P7000
C13T725A00	Epson UltraChrome DG Ink - White 600ml		C13T824200	Epson UltraChrome HD 350ml Cyan Pigment Ink Cartridge	
C13S400080	D5 Transfer General Purpose 24 inch Roll	SC-F530	C13T824300	Epson UltraChrome HD 350ml Vivid Magenta Pigment Ink Cartridge	
C13S400079	D5 Transfer General Purpose 17 inch Roll		C13T824400	Epson UltraChrome HD 350ml Yellow Pigment Ink Cartridge	
C13S400081	D5 Transfer General Purpose A3 Roll		C13T824500	Epson UltraChrome HD 350ml Light Cyan Pigment Ink Cartridge	
C13S400082	D5 Transfer General Purpose A4 Roll		C13T824600	Epson UltraChrome HD 350ml Vivid Light Magenta Pigment Ink Cartridge	
C13S400077	D5 Transfer General Purpose A3 Sheet		C13T824700	Epson UltraChrome HD 350ml Light Black Pigment Ink Cartridge	
C13S400078	D5 Transfer General Purpose A4 Sheet		C13T824800	Epson UltraChrome HD 350ml Matte Black Pigment Ink Cartridge	
C12C933151	Stand (24")		C13T824900	Epson UltraChrome HD 350ml Light Light Black Pigment Ink Cartridge	
C12C935701	Roll Feed Spindle (24")		C13T824100	Epson UltraChrome HD 350ml Photo Black Pigment Ink Cartridge	SC-P7000
C13S210057	Maintenance Box		C13T824200	Epson UltraChrome HD 350ml Cyan Pigment Ink Cartridge	
C13S210055	Auto Cutter Spare Blade		C13T824300	Epson UltraChrome HD 350ml Vivid Magenta Pigment Ink Cartridge	
C13T46H200	Epson UltraChrome DS Ink - Cyan 1.1L	SC-F6630	C13T824400	Epson UltraChrome HD 350ml Yellow Pigment Ink Cartridge	
C13T46H300	Epson UltraChrome DS Ink - Magenta 1.1L		C13T824500	Epson UltraChrome HD 350ml Light Cyan Pigment Ink Cartridge	
C13T46H400	Epson UltraChrome DS Ink - Yellow 1.1L		C13T824600	Epson UltraChrome HD 350ml Vivid Light Magenta Pigment Ink Cartridge	
C13T46H800	Epson UltraChrome DS Ink - HD Black 1.1L		C13T824700	Epson UltraChrome HD 350ml Light Black Pigment Ink Cartridge	
C13T741200	Epson UltraChrome DS Ink - Cyan 1L x 6pcs	SC-F7270	C13T824800	Epson UltraChrome HD 350ml Matte Black Pigment Ink Cartridge	
C13T741300	Epson UltraChrome DS Ink - Magenta 1L x 6pcs		C13T824900	Epson UltraChrome HD 350ml Light Light Black Pigment Ink Cartridge	
C13T741400	Epson UltraChrome DS Ink - Yellow 1L x 6pcs		C13T824A00	Epson UltraChrome HDX 350ml Orange Pigment Ink Cartridge	
C13T741X00	Epson UltraChrome DS Ink - HD Black 1L x 6pcs		C13T824B00	Epson UltraChrome HDX 350ml Green Pigment Ink Cartridge	
C13T46H200	Epson UltraChrome DS Ink - Cyan 1.1L	SC-F9340	C13T824D00	Epson UltraChrome HDX 350ml Violet Pigment Ink Cartridge	
C13T46H300	Epson UltraChrome DS Ink - Magenta 1.1L		C13T809000	Epson UltraChrome Pro 700ml Light Grey Pigment Ink Cartridge	SC-P20070
C13T46H400	Epson UltraChrome DS Ink - Yellow 1.1L		C13T809100	Epson UltraChrome Pro 700ml Photo Black Pigment Ink Cartridge	
C13T46H800	Epson UltraChrome DS Ink - HD Black 1.1L		C13T809200	Epson UltraChrome Pro 700ml Cyan Pigment Ink Cartridge	
C13T46H600	Epson UltraChrome DS Ink - FY 1.1L		C13T809300	Epson UltraChrome Pro 700ml Vivid Magenta Pigment Ink Cartridge	
C13T46H500	Epson UltraChrome DS Ink - FP 1.1L		C13T809400	Epson UltraChrome Pro 700ml Yellow Pigment Ink Cartridge	
C13T327100	Photo Black	SC-P407	C13T809500	Epson UltraChrome Pro 700ml Light Cyan Pigment Ink Cartridge	
C13T327200	Cyan		C13T809600	Epson UltraChrome Pro 700ml Vivid Light Magenta Pigment Ink Cartridge	
C13T327300	Magenta		C13T809700	Epson UltraChrome Pro 700ml Dark Grey Pigment Ink Cartridge	
C13T327400	Yellow		C13T809800	Epson UltraChrome Pro 700ml Matte Black Pigment Ink Cartridge	
C13T327700	Red		C13T809900	Epson UltraChrome Pro 700ml Grey Pigment Ink Cartridge	
C13T327800	Matte Black		C13T913100	Epson UltraChrome HD 200ml Photo Black Pigment Ink Cartridge	SC-P5000
C13T327900	Orange		C13T913200	Epson UltraChrome HD 200ml Cyan Pigment Ink Cartridge	
C13T327000	Gloss Optimizer		C13T913300	Epson UltraChrome HD 200ml Vivid Magenta Pigment Ink Cartridge	
C13T763100	Photo Black	SC-P607	C13T913400	Epson UltraChrome HD 200ml Yellow Pigment Ink Cartridge	
C13T763200	Cyan		C13T913500	Epson UltraChrome HD 200ml Light Cyan Pigment Ink Cartridge	
C13T763300	Vivid Magenta				
C13T763400	Yellow				
C13T763500	Light Cyan				
C13T763600	Vivid Light Magenta				
C13T763700	Light Black				
C13T763800	Matte Black				
C13T763900	Light Light Black				
C13T853100	Photo Black	SC-P807			
C13T853200	Cyan				
C13T853300	Vivid Magenta				
C13T853400	Yellow				
C13T853500	Light Cyan				
C13T853600	Vivid Light Magenta				
C13T853700	Light Black				
C13T853800	Matte Black				
C13T853900	Light Light Black				
C13T824100	Epson UltraChrome HD 350ml Photo Black Pigment Ink Cartridge	SC-P6000			
C13T824200	Epson UltraChrome HD 350ml Cyan Pigment Ink Cartridge				
C13T824300	Epson UltraChrome HD 350ml Vivid Magenta Pigment Ink Cartridge				
C13T824400	Epson UltraChrome HD 350ml Yellow Pigment Ink Cartridge				
C13T824500	Epson UltraChrome HD 350ml Light Cyan Pigment Ink Cartridge				
C13T824600	Epson UltraChrome HD 350ml Vivid Light Magenta Pigment Ink Cartridge				
C13T824700	Epson UltraChrome HD 350ml Light Black Pigment Ink Cartridge				

COMMERCIAL & INDUSTRIAL PRINTER

Commercial & Industrial Printer Consumable

Order Code	Description	Product	Order Code	Description	Product
C13T913600	Epson UltraChrome HD 200ml Vivid Light Magenta Pigment Ink Cartridge	SC-P5000	C11CH13402	SC-P9530	SC-P9530
C13T913700	Epson UltraChrome HD 200ml Light Black Pigment Ink Cartridge		C13T44N100	SC-P9530 PK IC (700ml)	
C13T913800	Epson UltraChrome HD 200ml Matte Black Pigment Ink Cartridge		C13T44N200	SC-P9530 CY IC (700ml)	
C13T913900	Epson UltraChrome HD 200ml Light Light Black Pigment Ink Cartridge		C13T44N300	SC-P9530 VM IC (700ml)	
C13T913A00	Epson UltraChrome HDX 200ml Orange Pigment Ink Cartridge		C13T44N400	SC-P9530 YL IC (700ml)	
C13T913B00	Epson UltraChrome HDX 200ml Green Pigment Ink Cartridge		C13T44V500	SC-P9530 LC IC (350ml)	
C13T913D00	Epson UltraChrome HDX 200ml Violet Pigment Ink Cartridge		C13T44V600	SC-P9530 VL IC (350ml)	
C11CH12402	SC-P7530	SC-P7530	C13T44V700	SC-P9530 LB IC (350ml)	
C13T44N100	SC-P7530 PK IC (700ml)		C13T44V800	SC-P9530 MK IC (350ml)	
C13T44N200	SC-P7530 CY IC (700ml)		C13T44V900	SC-P9530 LI IC (350ml)	
C13T44N300	SC-P7530 VM IC (700ml)		C13T44VA00	SC-P9530 OR IC (350ml)	
C13T44N400	SC-P7530 YL IC (700ml)		C13T44VB00	SC-P9530 GR IC (350ml)	
C13T44N500	SC-P7530 LC IC (700ml)		C13T44VD00	SC-P9530 VI IC (350ml)	
C13T44N600	SC-P7530 VL IC (700ml)		C13T44V100	SC-P9530 P BLACK IC (350ml)	
C13T44N700	SC-P7530 LB IC (700ml)		C13T44V200	SC-P9530 P BLACK IC (350ml)	
C13T44N800	SC-P7530 MK IC (700ml)		C13T44V300	SC-P9530 VM IC (350ml)	
C13T44N900	SC-P7530 LI IC (700ml)		C13T44V400	SC-P9530 YL IC (350ml)	
C13T44NA00	SC-P7530 OR IC (700ml)		C13T44V500	SC-P7530 LC IC (350ml)	
C13T44NB00	SC-P7530 GR IC (700ml)		C13T44V600	SC-P7530 VL IC (350ml)	
C13T44ND00	SC-P7530 VI IC (700ml)		C13T44V700	SC-P7530 LB IC (350ml)	
C13T44V100	SC-P7530 PK IC (350ml)		C13T44V800	SC-P7530 MK IC (350ml)	
C13T44V200	SC-P7530 CY IC (350ml)		C13T44V900	SC-P7530 LI IC (350ml)	
C13T44V300	SC-P7530 VM IC (350ml)		C13T44VA00	SC-P7530 OR IC (350ml)	
C13T44V400	SC-P7530 YL IC (350ml)		C13T44VB00	SC-P7530 GR IC (350ml)	
C13T44V500	SC-P7530 LC IC (350ml)		C13T44VD00	SC-P7530 VI IC (350ml)	
C13T44V600	SC-P7530 VL IC (350ml)		C13T44V100	SC-P7530 P BLACK IC (350ml)	
C13T44V700	SC-P7530 LB IC (350ml)		C13T44V200	SC-P7530 CYAN IC (350ml)	
C13T44V800	SC-P7530 MK IC (350ml)		C13T44V300	SC-P7530 VM IC (350ML)	
C13T44V900	SC-P7530 LI IC (350ml)		C13T44V400	SC-P7530 YELLOW IC (350ml)	
C13T44VA00	SC-P7530 OR IC (350ml)		C13T44V500	SC-P7530 LT CYAN IC (350ml)	
C13T44VB00	SC-P7530 GR IC (350ml)		C13T44V600	SC-P7530 VLM IC (350ml)	
C13T44VD00	SC-P7530 VI IC (350ml)		C13T44V700	SC-P7530 GREY IC (350ml)	
C13T44V100	SC-P7530 P BLACK IC (350ml)		C13T44V800	SC-P7530 M BLACK IC (350ml)	
C13T44V200	SC-P7530 CYAN IC (350ml)		C13T44V900	SC-P7530 LT GREY IC (350ml)	
C13T44V300	SC-P7530 VM IC (350ML)		C13T44VA00	SC-P7530 ORANGE IC (350ml)	
C13T44V400	SC-P7530 YELLOW IC (350ml)		C13T44VB00	SC-P7530 GREEN IC (350ml)	
C13T44V500	SC-P7530 LT CYAN IC (350ml)		C13T44VD00	SC-P7530 VIOLET IC (350ml)	
C13T44V600	SC-P7530 VLM IC (350ml)		C13T49V110	SC-V7000 Black IC (1000ml)	SC-V7000
C13T44V700	SC-P7530 GREY IC (350ml)		C13T49V210	SC-V7000 Cyan IC (1000ml)	
C13T44V800	SC-P7530 M BLACK IC (350ml)		C13T49V310	SC-V7000 Magenta IC (1000ml)	
C13T44V900	SC-P7530 LT GREY IC (350ml)		C13T49V410	SC-V7000 Yellow IC (1000ml)	
C13T44VA00	SC-P7530 ORANGE IC (350ml)		C13T49V510	SC-V7000 Light Cyan IC (1000ml)	
C13T44VB00	SC-P7530 GREEN IC (350ml)		C13T49V610	SC-V7000 Light Magenta IC (1000ml)	
C13T44VD00	SC-P7530 VIOLET IC (350ml)		C13T49V710	SC-V7000 Gray IC (1000ml)	
C13T49V110	SC-V7000 Black IC (1000ml)		C13T49V810	SC-V7000 Red IC (1000ml)	
C13T49V210	SC-V7000 Cyan IC (1000ml)		C13T49V910	SC-V7000 White IC (1000ml)	
C13T49V310	SC-V7000 Magenta IC (1000ml)		C13T49VA10	SC-V7000 Varnish IC (1000ml)	
C13T49V410	SC-V7000 Yellow IC (1000ml)		C13T48R100	SC-P8530D PHOTO BLACK 700ML	SC-P8530D
C13T49V510	SC-V7000 Light Cyan IC (1000ml)		C13T48R200	SC-P8530D CYAN IC 700ML	
C13T49V610	SC-V7000 Light Magenta IC (1000ml)		C13T48R300	SC-P8530D MAGENTA IC 700ML	
C13T49V710	SC-V7000 Gray IC (1000ml)		C13T48R400	SC-P8530D YELLOW IC 700ML	
C13T49V810	SC-V7000 Red IC (1000ml)		C13T48R800	SC-P8530D MATTE BLACK IC 700ML	
C13T49V910	SC-V7000 White IC (1000ml)		C13T48RE00	SC-P8530D GRAY IC 700ML	
C13T49VA10	SC-V7000 Varnish IC (1000ml)				
C13T48R100	SC-P8530D PHOTO BLACK 700ML		C13T710100	Epson UltraChrome D6 700ml Black Dye Ink Cartridge	SL-D3000
C13T48R200	SC-P8530D CYAN IC 700ML		C13T710200	Epson UltraChrome D6 700ml Cyan Dye Ink Cartridge	
C13T48R300	SC-P8530D MAGENTA IC 700ML		C13T710300	Epson UltraChrome D6 700ml Magenta Dye Ink Cartridge	
C13T48R400	SC-P8530D YELLOW IC 700ML		C13T710400	Epson UltraChrome D6 700ml Yellow Dye Ink Cartridge	
C13T48R800	SC-P8530D MATTE BLACK IC 700ML		C13T710500	Epson UltraChrome D6 700ml Light Cyan Dye Ink Cartridge	
C13T48RE00	SC-P8530D GRAY IC 700ML		C13T710600	Epson UltraChrome D6 700ml Light Magenta Dye Ink Cartridge	
			C13T892100	Black Ink Cartridge (700 ml)	SC-S4/6/80670
			C13T892200	Cyan Ink Cartridge (700 ml)	
			C13T892300	Magenta Ink Cartridge (700 ml)	
			C13T892400	Yellow Ink Cartridge (700 ml)	
			C13T892500	SC-S80670 LIGHT CYAN IC (700ML)	SC-S80670
			C13T892600	SC-S80670 LIGHT MAGENTA IC (700ML)	
			C13T892700	SC-S80670 LIGHT BLACK IC (700ML)	
			C13T892800	SC-S80670 ORANGE IC (700ML)	
			C13T892900	SC-S80670 RED IC (700ML)	
			C13T892A00	SC-S80670 WHITE IC (600ML)	
			C13T45R100	SC-R5030 Black 3000ml (1.5L X2)	SC-R5030
			C13T45R200	SC-R5030 Cyan 3000ml (1.5L X2)	
			C13T45R300	SC-R5030 Magenta 3000ml (1.5L X2)	
			C13T45R400	SC-R5030 Yellow 3000ml (1.5L X2)	
			C13T45R500	SC-R5030 Light Cyan 3000ml (1.5L X2)	
			C13T45R600	SC-R5030 Light Magenta 3000ml (1.5L X2)	
			C13T45R700	SC-R5030 Optimizer 3000ml (1.5L X2)	
			C13T45R800	SC-R5030 Maintenance Liquid 3L (1.5L X2)	
			C13T43Y100	Epson UltraChrome D6r-S 200ml Black Ink Cartridge	SL-D830
			C13T43Y200	Epson UltraChrome D6r-S 200ml Cyan Ink Cartridge	
			C13T43Y300	Epson UltraChrome D6r-S 200ml Magenta Ink Cartridge	
			C13T43Y400	Epson UltraChrome D6r-S 200ml Yellow Ink Cartridge	
			C13T43Y500	Epson UltraChrome D6r-S 200ml Light Cyan Ink Cartridge	
			C13T43Y600	Epson UltraChrome D6r-S 200ml Light Magenta Ink Cartridge	